



SMAGP Monoclonal Antibody

Catalog No	BYmab-07175
Isotype	IgG
Reactivity	Human;Rat;Mouse
Applications	WB
Gene Name	SMAGP
Protein Name	Small cell adhesion glycoprotein (Small transmembrane and glycosylated protein)
Immunogen	Synthesized peptide derived from human protein . at AA range: 30-110
Specificity	SMAGP Monoclonal Antibody detects endogenous levels of protein.
Formulation	Liquid in PBS containing 50% glycerol, and 0.02% sodium azide.
Source	Monoclonal, Mouse,IgG
Purification	The antibody was affinity-purified from mouse antiserum by affinity-chromatography using epitope-specific immunogen.
Dilution	WB 1:500-2000
Concentration	1 mg/ml
Purity	≥90%
Storage Stability	-20°C/1 year
Synonyms	
Observed Band	10kD
Cell Pathway	Cell membrane ; Single-pass type III membrane protein . Cytoplasmic vesicle membrane ; Single-pass type III membrane protein . Predominantly on lateral parts of the membrane, at cell-cell epithelial junctions (PubMed:15021913). Detected on cytoplasmic membranes in undifferentiated tumors (PubMed:15986429). .
Tissue Specificity	Detected in breast, endometrium, colon and biliary tract. Detected in polarized epithelial structures characterized by cell-cell adhesion (at protein level).
Function	function:May play a role in epithelial cell-cell contacts. May play a role in tumor invasiveness and metastasis formation.,PTM:O-glycosylated. The O-glycan is modified with sialic acid residues.,similarity:Belongs to the SMAGP family.,subcellular location:Predominantly on lateral parts of the membrane, at cell-cell epithelial junctions. Detected on cytoplasmic membranes in undifferentiated tumors.,tissue specificity:Detected in breast, endometrium, colon and biliary tract. Detected in polarized epithelial structures characterized by cell-cell adhesion (at protein level).,

Nanjing BYabscience technology Co.,Ltd



Background

function: May play a role in epithelial cell-cell contacts. May play a role in tumor invasiveness and metastasis formation., PTM: O-glycosylated. The O-glycan is modified with sialic acid residues., similarity: Belongs to the SMAGP family., subcellular location: Predominantly on lateral parts of the membrane, at cell-cell epithelial junctions. Detected on cytoplasmic membranes in undifferentiated tumors., tissue specificity: Detected in breast, endometrium, colon and biliary tract. Detected in polarized epithelial structures characterized by cell-cell adhesion (at protein level).,

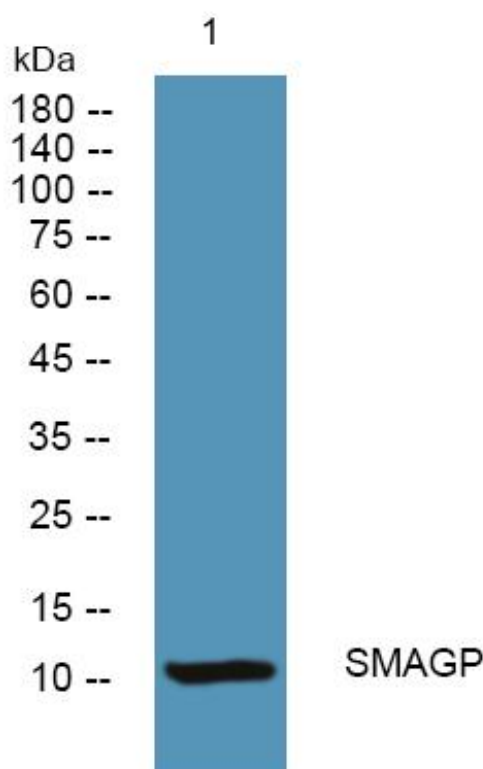
matters needing attention

Avoid repeated freezing and thawing!

Usage suggestions

This product can be used in immunological reaction related experiments. For more information, please consult technical personnel.

Products Images



Western Blot analysis of various cells using SMAGP Monoclonal Antibody