



NAAA Monoclonal Antibody

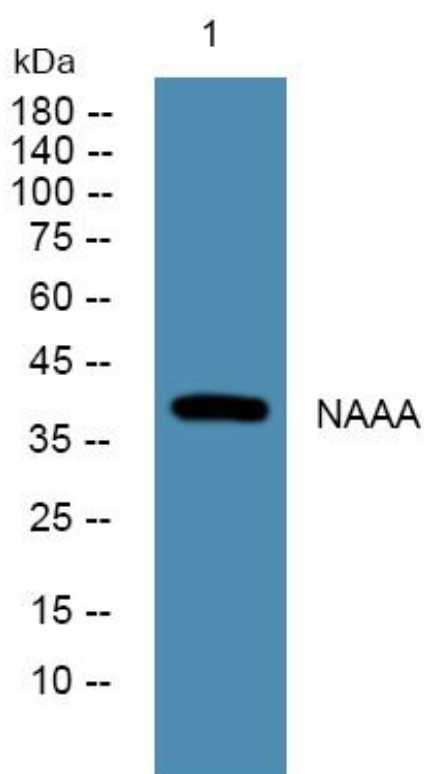
Catalog No	BYmab-07165
Isotype	IgG
Reactivity	Human;Rat;Mouse
Applications	WB
Gene Name	NAAA AS AHL PLT
Protein Name	N-acyl ethanolamine-hydrolyzing acid amidase (EC 3.5.1.-) (Acid ceramidase-like protein) (N-acylsphingosine amidohydrolase-like) (ASAH-like protein) [Cleaved into: N-acyl ethanolamine-hydrolyzing acid a
Immunogen	Synthesized peptide derived from human protein . at AA range: 230-310
Specificity	NAAA Monoclonal Antibody detects endogenous levels of protein.
Formulation	Liquid in PBS containing 50% glycerol, and 0.02% sodium azide.
Source	Monoclonal, Mouse,IgG
Purification	The antibody was affinity-purified from mouse antiserum by affinity-chromatography using epitope-specific immunogen.
Dilution	WB 1:500-2000
Concentration	1 mg/ml
Purity	≥90%
Storage Stability	-20°C/1 year
Synonyms	
Observed Band	39kD
Cell Pathway	Lysosome . Membrane ; Peripheral membrane protein .
Tissue Specificity	Expressed in numerous tissues, with highest levels in liver and kidney, followed by pancreas.
Function	enzyme regulation:Stimulated by DTT and Nonidet P-40.,function:Degrades bioactive fatty acid amides to their corresponding acids, with the following preference: N-palmitoylethanolamine > N-myristoylethanolamine > N-lauroylethanolamine = N-stearoylethanolamine > N-arachidonoyl ethanolamine > N-oleoylethanolamine. Also exhibits weak hydrolytic activity against the ceramides N-lauroylsphingosine and N-palmitoylsphingosine.,PTM:N-glycosylated. Tunicamycin treatment causes a reduction in specific activity against N-palmitoylethanolamine.,similarity:Belongs to the acid ceramidase family.,tissue specificity:Expressed in numerous tissues, with highest levels in liver and kidney, followed by pancreas.,

Nanjing BYabscience technology Co.,Ltd



Background	This gene encodes an N-acylethanolamine-hydrolyzing enzyme which is highly similar to acid ceramidase. Multiple transcript variants encoding different isoforms have been found for this gene. [provided by RefSeq, Jul 2008],
matters needing attention	Avoid repeated freezing and thawing!
Usage suggestions	This product can be used in immunological reaction related experiments. For more information, please consult technical personnel.

Products Images



Western Blot analysis of various cells using NAAA Monoclonal Antibody