



# LN28B Monoclonal Antibody

Catalog No	BYmab-07158
Isotype	IgG
Reactivity	Human;Mouse
Applications	WB
Gene Name	LIN28B CSDD2
Protein Name	Protein lin-28 homolog B (Lin-28B)
Immunogen	Synthesized peptide derived from human protein . at AA range: 60-140
Specificity	LN28B Monoclonal Antibody detects endogenous levels of protein.
Formulation	Liquid in PBS containing 50% glycerol, and 0.02% sodium azide.
Source	Monoclonal, Mouse,IgG
Purification	The antibody was affinity-purified from mouse antiserum by affinity-chromatography using epitope-specific immunogen.
Dilution	WB 1:500-2000
Concentration	1 mg/ml
Purity	≥90%
Storage Stability	-20°C/1 year
Synonyms	
Observed Band	27kD
Cell Pathway	Nucleus. Nucleus, nucleolus . Cytoplasm . Predominantly nucleolar (PubMed:22118463). In Huh7 cells, predominantly cytoplasmic, with only a subset of cells exhibiting strong nuclear staining; however, the specificity of the Monoclonal antibody used in these experiments has not been not documented (PubMed:16971064). .
Tissue Specificity	Expressed at high levels in the placenta and, at much lower, in testis and fetal liver (PubMed:16971064). Isoform 1 is only detected in placenta and in moderately and poorly differentiated hepatocellular carcinoma cells (at protein level). Isoform 2 is detected in fetal liver, non-tumor liver tissues, as well as well-differentiated tumor tissues (at protein level). Tends to be up-regulated in triple-negative (ER-,PR-,HER2-) breast tumors, as well as in liver, ovarian, and thyroid carcinomas (PubMed:22118463).
Function	function:When overexpressed, isoform 1 stimulates growth of the breast adenocarcinoma cell line MCF-7. Isoform 2 has no effect on cell growth.,induction:Might be negatively regulated by the microRNA

Nanjing BYabscience technology Co.,Ltd



let-7b.,similarity:Belongs to the lin-28 family.,similarity:Contains 1 CSD (cold-shock) domain.,similarity:Contains 2 CCHC-type zinc fingers.,subcellular location:Predominantly cytoplasmic at G1 phase, accumulates in the nucleus in S and G2 phases. The frequency of nuclear localization in S and in G2 phases is 60% and 30%, respectively.,tissue specificity:High expression in testis, fetal liver, placenta and in hepatocellular carcinoma (HCC). Isoform 1 is only detected in moderately and poorly differentiated HCC tissues and placenta (at protein level). Isoform 2 is detected in fetal liver, non-tumor liver tissues, as well as well-differentiated tumor tissues (at protein level).,

#### Background

The protein encoded by this gene belongs to the lin-28 family, which is characterized by the presence of a cold-shock domain and a pair of CCHC zinc finger domains. This gene is highly expressed in testis, fetal liver, placenta, and in primary human tumors and cancer cell lines. It is negatively regulated by microRNAs that target sites in the 3' UTR, and overexpression of this gene in primary tumors is linked to the repression of let-7 family of microRNAs and derepression of let-7 targets, which facilitates cellular transformation. [provided by RefSeq, Jun 2012],

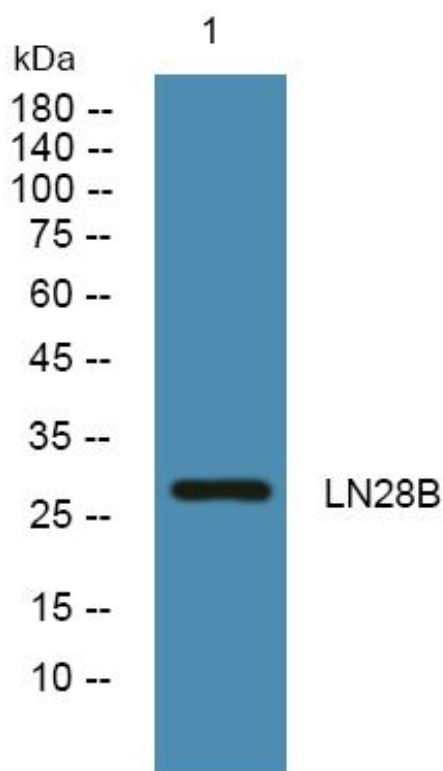
#### matters needing attention

Avoid repeated freezing and thawing!

#### Usage suggestions

This product can be used in immunological reaction related experiments. For more information, please consult technical personnel.

## Products Images



Western Blot analysis of various cells using LN28B Monoclonal Antibody

Nanjing BYabscience technology Co.,Ltd

网址: [www.njbybio.com](http://www.njbybio.com)

官方热线: 025-5229-8998

监督电话: 15950492658