



STC2 Monoclonal Antibody

Catalog No	BYmab-07155
Isotype	IgG
Reactivity	Human;Rat;Mouse
Applications	WB
Gene Name	STC2
Protein Name	Stanniocalcin-2 (STC-2) (Stanniocalcin-related protein) (STC-related protein) (STCRP)
Immunogen	Synthesized peptide derived from human protein . at AA range: 170-250
Specificity	STC2 Monoclonal Antibody detects endogenous levels of protein.
Formulation	Liquid in PBS containing 50% glycerol, and 0.02% sodium azide.
Source	Monoclonal, Mouse,IgG
Purification	The antibody was affinity-purified from mouse antiserum by affinity-chromatography using epitope-specific immunogen.
Dilution	WB 1:500-2000
Concentration	1 mg/ml
Purity	≥90%
Storage Stability	-20°C/1 year
Synonyms	
Observed Band	33kD
Cell Pathway	Secreted .
Tissue Specificity	Expressed in a variety of tissues including muscle, heart, pancreas, kidney, spleen, prostate, small intestine, colon and peripheral blood leukocytes.
Function	function:Has an anti-hypocalcemic action on calcium and phosphate homeostasis.,similarity:Belongs to the stanniocalcin family.,subunit:Homodimer; disulfide-linked.,tissue specificity:Expressed in a variety of tissues including muscle, heart, pancreas, kidney, spleen, prostate, small intestine, colon and peripheral blood Leucocytes.,
Background	This gene encodes a secreted, homodimeric glycoprotein that is expressed in a wide variety of tissues and may have autocrine or paracrine functions. The encoded protein has 10 of its 15 cysteine residues conserved among stanniocalcin family members and is phosphorylated by casein kinase 2 exclusively on its serine residues. Its C-terminus contains a cluster of histidine residues which may interact with metal ions. The protein may play a role in the

Nanjing BYabscience technology Co.,Ltd



regulation of renal and intestinal calcium and phosphate transport, cell metabolism, or cellular calcium/phosphate homeostasis. Constitutive overexpression of human stanniocalcin 2 in mice resulted in pre- and postnatal growth restriction, reduced bone and skeletal muscle growth, and organomegaly. Expression of this gene is induced by estrogen and altered in some breast cancers. [provided by RefSeq, Jul 2008],

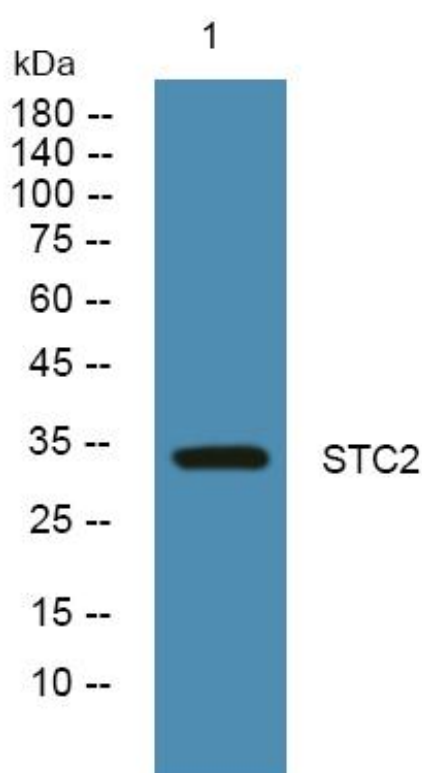
matters needing attention

Avoid repeated freezing and thawing!

Usage suggestions

This product can be used in immunological reaction related experiments. For more information, please consult technical personnel.

Products Images



Western Blot analysis of various cells using STC2 Monoclonal Antibody