



PRS27 Monoclonal Antibody

Catalog No	BYmab-07150
Isotype	IgG
Reactivity	Human;Rat;Mouse
Applications	WB
Gene Name	PRSS27 MPN UNQ1884/PRO4327
Protein Name	Serine protease 27 (EC 3.4.21.-) (Marapsin) (Pancreasin)
Immunogen	Synthesized peptide derived from human protein . at AA range: 30-110
Specificity	PRS27 Monoclonal Antibody detects endogenous levels of protein.
Formulation	Liquid in PBS containing 50% glycerol, and 0.02% sodium azide.
Source	Monoclonal, Mouse,IgG
Purification	The antibody was affinity-purified from mouse antiserum by affinity-chromatography using epitope-specific immunogen.
Dilution	WB 1:500-2000
Concentration	1 mg/ml
Purity	≥90%
Storage Stability	-20°C/1 year
Synonyms	
Observed Band	31kD
Cell Pathway	Secreted.
Tissue Specificity	Expressed predominantly in the pancreas.
Function	PTM:N-glycosylated.,similarity:Belongs to the peptidase S1 family.,similarity:Contains 1 peptidase S1 domain.,tissue specificity:Expressed predominantly in the pancreas.,
Background	This gene is located within a large protease gene cluster on chromosome 16. It belongs to the group-1 subfamily of serine proteases. The encoded protein is a secreted tryptic serine protease and is expressed mainly in the pancreas. Alternative splicing results in multiple transcript variants. [provided by RefSeq, Jan 2016],
matters needing attention	Avoid repeated freezing and thawing!

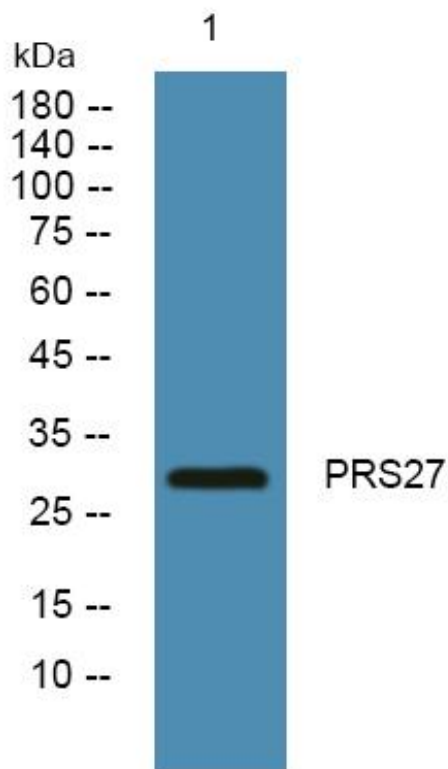
Nanjing BYabscience technology Co.,Ltd



Usage suggestions

This product can be used in immunological reaction related experiments. For more information, please consult technical personnel.

Products Images



Western Blot analysis of various cells using PRS27 Monoclonal Antibody

Nanjing BYabs science technology Co.,Ltd

网址: www.njbybio.com

官方热线: 025-5229-8998

监督电话: 15950492658