



ARC Monoclonal Antibody

Catalog No	BYmab-07144
Isotype	IgG
Reactivity	Human;Rat;Mouse
Applications	WB
Gene Name	ARC KIAA0278
Protein Name	Activity-regulated cytoskeleton-associated protein (ARC/ARG3.1) (Activity-regulated gene 3.1 protein homolog) (Arg3.1)
Immunogen	Synthesized peptide derived from human protein . at AA range: 70-150
Specificity	ARC Monoclonal Antibody detects endogenous levels of protein.
Formulation	Liquid in PBS containing 50% glycerol, and 0.02% sodium azide.
Source	Monoclonal, Mouse,IgG
Purification	The antibody was affinity-purified from mouse antiserum by affinity-chromatography using epitope-specific immunogen.
Dilution	WB 1:500-2000
Concentration	1 mg/ml
Purity	≥90%
Storage Stability	-20°C/1 year
Synonyms	
Observed Band	43kD
Cell Pathway	Extracellular vesicle membrane ; Lipid-anchor . Cell junction, synapse, postsynaptic cell membrane ; Lipid-anchor . Cell junction, synapse . Cell junction, synapse, postsynaptic density . Early endosome membrane . Cell projection, dendrite . Cytoplasm, cytoskeleton . Cytoplasm, cell cortex . Cell projection, dendritic spine . Cytoplasmic vesicle, secretory vesicle, acrosome . Forms virion-like extracellular vesicles that are released from neurons. Enriched in postsynaptic density of dendritic spines. Targeted to inactive synapses following interaction with CAMK2B in the kinase inactive state. Accumulation at weaker synapses may be required to prevent their undesired enhancement. Associated with the cell cortex of neuronal soma and dendrites (By similarity). Associated with the sperm tail (
Tissue Specificity	Brain,Forebrain,Uterus,
Function	function:Required for consolidation of synaptic plasticity as well as formation of long-term memory. Regulates endocytosis of AMPA receptors in response to

Nanjing BYabscience technology Co.,Ltd



synaptic activity. Required for homeostatic synaptic scaling of AMPA receptors.,similarity:Belongs to the ARC/ARG3.1 family.,subcellular location:Associated with the cell cortex of neuronal soma and dendrites. Enriched in postsynaptic density of dendritic spines. Associated with the sperm tail.,subunit:Interacts with SH3GL1/endophilin-2, SH3GL3/endophilin-3 and DNM2/DYN2.,

Background

function:Required for consolidation of synaptic plasticity as well as formation of long-term memory. Regulates endocytosis of AMPA receptors in response to synaptic activity. Required for homeostatic synaptic scaling of AMPA receptors.,similarity:Belongs to the ARC/ARG3.1 family.,subcellular location:Associated with the cell cortex of neuronal soma and dendrites. Enriched in postsynaptic density of dendritic spines. Associated with the sperm tail.,subunit:Interacts with SH3GL1/endophilin-2, SH3GL3/endophilin-3 and DNM2/DYN2.,

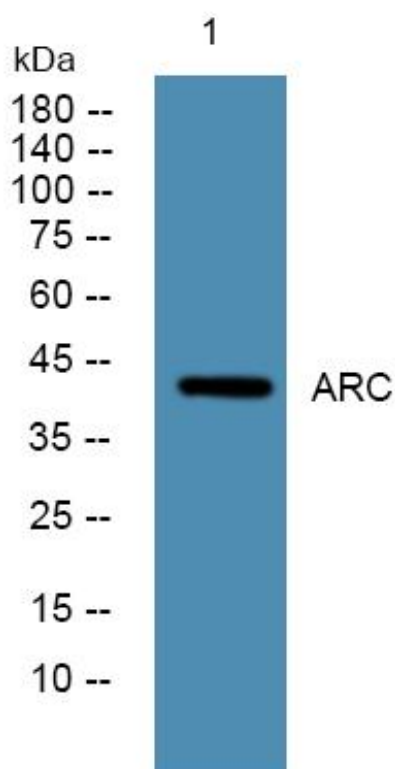
matters needing attention

Avoid repeated freezing and thawing!

Usage suggestions

This product can be used in immunological reaction related experiments. For more information, please consult technical personnel.

Products Images



Western Blot analysis of various cells using ARC Monoclonal Antibody

Nanjing BYabscience technology Co.,Ltd

网址: www.njbybio.com

官方热线: 025-5229-8998

监督电话: 15950492658