



# CRTAM Monoclonal Antibody

Catalog No	BYmab-07135
Isotype	IgG
Reactivity	Human;Mouse
Applications	WB
Gene Name	CRTAM
Protein Name	Cytotoxic and regulatory T-cell molecule (Class-I MHC-restricted T-cell-associated molecule) (CD antigen CD355)
Immunogen	Synthesized peptide derived from human protein . at AA range: 260-340
Specificity	CRTAM Monoclonal Antibody detects endogenous levels of protein.
Formulation	Liquid in PBS containing 50% glycerol, and 0.02% sodium azide.
Source	Monoclonal, Mouse,IgG
Purification	The antibody was affinity-purified from mouse antiserum by affinity-chromatography using epitope-specific immunogen.
Dilution	WB 1:500-2000
Concentration	1 mg/ml
Purity	≥90%
Storage Stability	-20°C/1 year
Synonyms	
Observed Band	43kD
Cell Pathway	Cell membrane ; Single-pass type I membrane protein . In a subset of CD4+ T-cells, colocalizes with SCRIB at the immunological synapse during the late phase of T-cell activation. .
Tissue Specificity	In the immune system, expression is restricted to activated class-I MHC-restricted cells, including NKT and CD8 T-cells (PubMed:10811014, PubMed:15811952, PubMed:16300832). Strongly expressed in spleen, thymus, small intestine, peripheral blood leukocyte, and in Purkinje neurons in cerebellum. Expressed at much lower levels in testis, ovary, colon, lung and lymphoid tissues (PubMed:16300832).
Function	function:Interaction with CADM1 promotes natural killer (NK) cell cytotoxicity and interferon-gamma (IFN-gamma) secretion by CD8+ cells in vitro as well as NK cell-mediated rejection of tumors expressing CADM3 in vivo.,similarity:Belongs to the nectin family.,similarity:Contains 1 Ig-like C2-type (immunoglobulin-like) domain.,similarity:Contains 1 Ig-like V-type (immunoglobulin-like) domain.,subunit:Interacts with CADM1.,tissue specificity:In the immune system,

Nanjing BYabscience technology Co.,Ltd



expression is restricted to activated class-I MHC-restricted cells, including NKT and CD8 cells. Strongly expressed in spleen, thymus, small intestine, peripheral blood leukocyte, and in Purkinje neurons in cerebellum. Expressed at much lower levels in testis, ovary, colon, lung and lymphoid tissues.,

#### Background

cytotoxic and regulatory T-cell molecule(CRTAM) Homo sapiens The CRTAM gene is upregulated in CD4 (see MIM 186940)-positive and CD8 (see CD8A; MIM 186910)-positive T cells and encodes a type I transmembrane protein with V and C1-like Ig domains (Yeh et al., 2008 [PubMed 18329370]).[supplied by OMIM, Feb 2009],

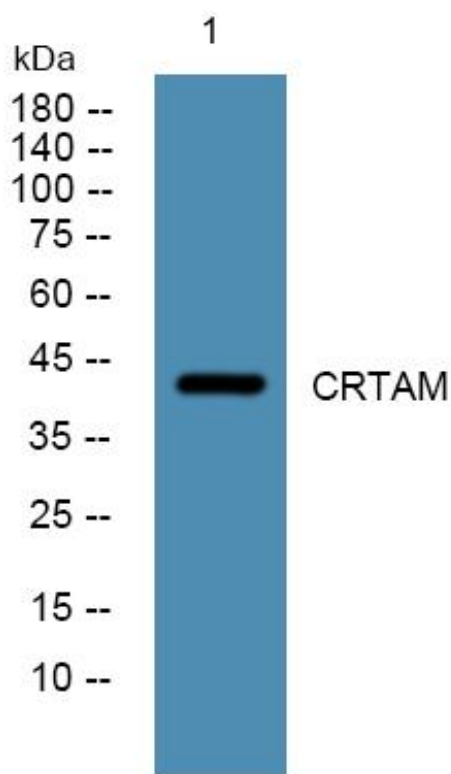
#### matters needing attention

Avoid repeated freezing and thawing!

#### Usage suggestions

This product can be used in immunological reaction related experiments. For more information, please consult technical personnel.

## Products Images



Nanjing BYabscience technology Co.,Ltd

网址: [www.njbybio.com](http://www.njbybio.com)

官方热线: 025-5229-8998

监督电话: 15950492658