



SOX15 Monoclonal Antibody

Catalog No	BYmab-07127
Isotype	IgG
Reactivity	Human;Mouse
Applications	WB
Gene Name	SOX15 SOX12 SOX20 SOX26 SOX27
Protein Name	Protein SOX-15 (Protein SOX-12) (Protein SOX-20)
Immunogen	Synthesized peptide derived from human protein . at AA range: 30-110
Specificity	SOX15 Monoclonal Antibody detects endogenous levels of protein.
Formulation	Liquid in PBS containing 50% glycerol, and 0.02% sodium azide.
Source	Monoclonal, Mouse,IgG
Purification	The antibody was affinity-purified from mouse antiserum by affinity-chromatography using epitope-specific immunogen.
Dilution	WB 1:500-2000
Concentration	1 mg/ml
Purity	≥90%
Storage Stability	-20°C/1 year
Synonyms	
Observed Band	25kD
Cell Pathway	Nucleus .
Tissue Specificity	Widely expressed in fetal and adult tissues examined, highest level found in fetal spinal cord and adult brain and testis.
Function	function: Binds to the 5'-AACAAAT-3' sequence., similarity: Contains 1 HMG box DNA-binding domain., tissue specificity: Widely expressed in fetal and adult tissues examined, highest level found in fetal spinal cord and adult brain and testis.,
Background	This gene encodes a member of the SOX (SRY-related HMG-box) family of transcription factors involved in the regulation of embryonic development and in the determination of the cell fate. The encoded protein may act as a transcriptional regulator after forming a protein complex with other proteins. [provided by RefSeq, Jul 2008],
matters needing attention	Avoid repeated freezing and thawing!

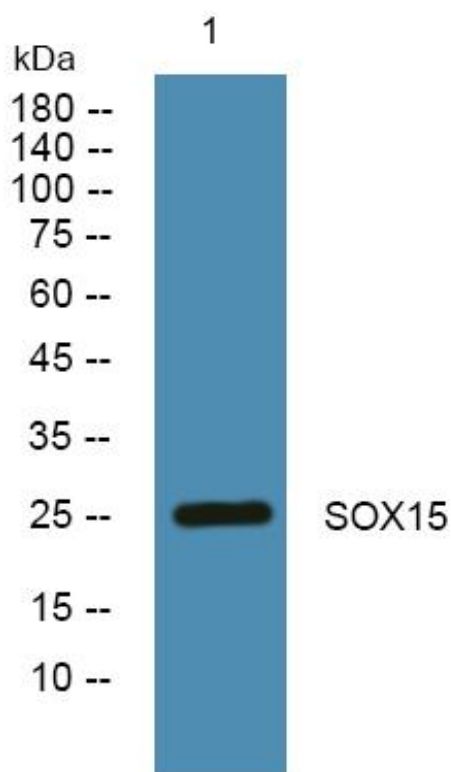
Nanjing BYabscience technology Co.,Ltd



Usage suggestions

This product can be used in immunological reaction related experiments. For more information, please consult technical personnel.

Products Images



Western Blot analysis of various cells using SOX15 Monoclonal Antibody