



RSPO3 Monoclonal Antibody

Catalog No	BYmab-07118
Isotype	IgG
Reactivity	Human;Mouse
Applications	WB
Gene Name	RSPO3 PWTSR THSD2
Protein Name	R-spondin-3 (Protein with TSP type-1 repeat) (hPWTSR) (Roof plate-specific spondin-3) (hRspo3) (Thrombospondin type-1 domain-containing protein 2)
Immunogen	Synthesized peptide derived from part region of human protein
Specificity	RSPO3 Monoclonal Antibody detects endogenous levels of protein.
Formulation	Liquid in PBS containing 50% glycerol, and 0.02% sodium azide.
Source	Monoclonal, Mouse,IgG
Purification	The antibody was affinity-purified from mouse antiserum by affinity-chromatography using epitope-specific immunogen.
Dilution	WB 1:500-2000
Concentration	1 mg/ml
Purity	≥90%
Storage Stability	-20°C/1 year
Synonyms	
Observed Band	29kD
Cell Pathway	Secreted .
Tissue Specificity	Ubiquitously expressed. Expressed at higher level in placenta, small intestine, fetal thymus and lymph node (PubMed:12463421). Highly expressed in endothelial cells (PubMed:26766444).
Function	domain:The FU repeats are required for activation and stabilization of beta-catenin.,function:Activator of the beta-catenin signaling cascade, leading to TCF-dependent gene activation. Acts both in the canonical Wnt/beta-catenin-dependent pathway, possibly via a direct interaction with Wnt proteins, and in a Wnt-independent beta catenin pathway through a receptor signaling pathway that may not use frizzled/LRP receptors. Acts as a ligand for frizzled FZD8 and LRP6. May negatively regulate the TGF-beta pathway.,miscellaneous:Upon injection into mice, it induces rapid onset of crypt cell proliferation involving beta-catenin stabilization. It also displays efficacy in a model of chemotherapy-induced intestinal mucositis.,similarity:Belongs to the

Nanjing BYabscience technology Co.,Ltd



R-spondin family.,similarity:Contains 1 TSP type-1 domain.,similarity:Contains 2 FU (furin-like) repeats.,subunit:Interacts with the extracellular

Background

This gene belongs to the R-spondin family. The encoded protein plays a role in the regulation of Wnt (wingless-type MMTV integration site family)/beta-catenin and Wnt/planar cell polarity (PCP) signaling pathways, which are involved in development, cell growth and disease pathogenesis. Genome-wide association studies suggest a correlation of this gene with bone mineral density and risk of fracture. This gene may be involved in tumor development. [provided by RefSeq, Jul 2013],

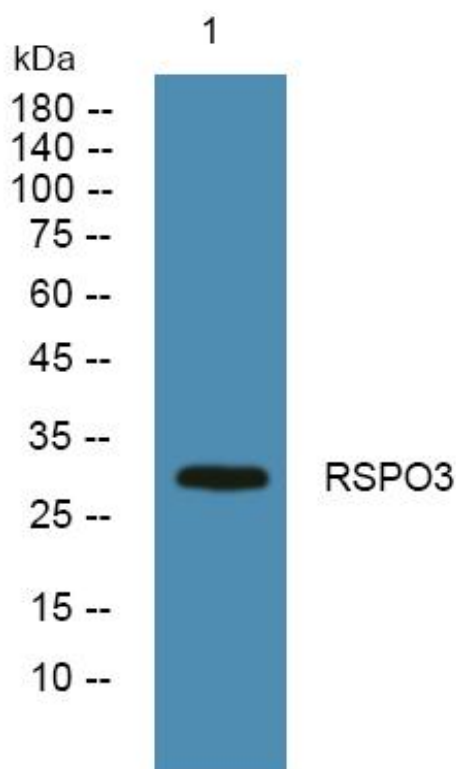
matters needing attention

Avoid repeated freezing and thawing!

Usage suggestions

This product can be used in immunological reaction related experiments. For more information, please consult technical personnel.

Products Images



Western Blot analysis of various cells using RSPO3 Monoclonal Antibody

Nanjing BYabs science technology Co.,Ltd

网址: www.njbybio.com

官方热线: 025-5229-8998

监督电话: 15950492658