



CRDL2 Monoclonal Antibody

Catalog No	BYmab-07110
Isotype	IgG
Reactivity	Human;Mouse
Applications	WB
Gene Name	CHRD2 BNF1 CHL2 UNQ765/PRO1557
Protein Name	Chordin-like protein 2 (Breast tumor novel factor 1) (BNF-1) (Chordin-related protein 2)
Immunogen	Synthesized peptide derived from human protein . at AA range: 330-410
Specificity	CRDL2 Monoclonal Antibody detects endogenous levels of protein.
Formulation	Liquid in PBS containing 50% glycerol, and 0.02% sodium azide.
Source	Monoclonal, Mouse,IgG
Purification	The antibody was affinity-purified from mouse antiserum by affinity-chromatography using epitope-specific immunogen.
Dilution	WB 1:500-2000
Concentration	1 mg/ml
Purity	≥90%
Storage Stability	-20°C/1 year
Synonyms	
Observed Band	47kD
Cell Pathway	[Isoform 1]: Secreted .; [Isoform 2]: Secreted .; [Isoform 3]: Cytoplasm .; [Isoform 4]: Cytoplasm .; [Isoform 5]: Cytoplasm .
Tissue Specificity	Highly expressed in uterus. Moderately expressed in heart, liver, prostate, testis and ovary. Weakly expressed in skeletal muscle, kidney, spleen, small intestine and colon. Expressed in the secretory epithelial cells of uterine endometrium, fallopian tubes, endocervical glands, bladder and prostate, as well as the transitional epithelium of the urinary bladder, and in bone osteoblasts (at protein level). In normal cartilage, expression was confined in a few chondrocytes in the superficial zone as well as in the middle zone. In diseased cartilage coming from osteoarthritic patients, expression was limited to the middle zone of chondrocytes. Isoform 1 and isoform 2 are expressed in fetal cerebellum and heart, while only isoform 2 is detected in fetal spleen. Isoform 2 present in plasma.
Function	alternative products:Five additional mRNAs also exist. Differential expression of isoforms was observed during myoblast and osteoblast differentiation and maturation,caution:According to PubMed:14660436 interacts with human BMP2,

Nanjing BYabscience technology Co.,Ltd



BMP4, BMP5, BMP6, BMP7 but not human INHBA. According to PubMed:15094188 interacts with human INHBA but not human BMP2, BMP4 and BMP6.,function:May inhibits BMPs activity by blocking their interaction with their receptors. Has a negative regulator effect on the cartilage formation/regeneration from immature mesenchymal cells, by preventing or reducing the rate of matrix accumulation (By similarity). Implicated in tumor angiogenesis. May play a role during myoblast and osteoblast differentiation, and maturation.,induction:Up-regulated in breast tumors but also in lung and colon tumors.,similarity:Contains 3 VWFC domains.,subunit:Interacts with GDF5 (By similarity)

Background

This gene encodes a member of the chordin family of proteins. Chordin family members are secreted proteins that share a cysteine-rich pro-collagen repeat domain and associate with members of the transforming growth factor beta superfamily. In vitro assays demonstrate a direct interaction between the encoded protein and human activin A. This gene is expressed in many tissues including osteoblasts, where it is differentially expressed during differentiation. In addition, its expression is upregulated in human osteoarthritic joint cartilage, suggesting a role in adult cartilage regeneration. [provided by RefSeq, Jan 2015],

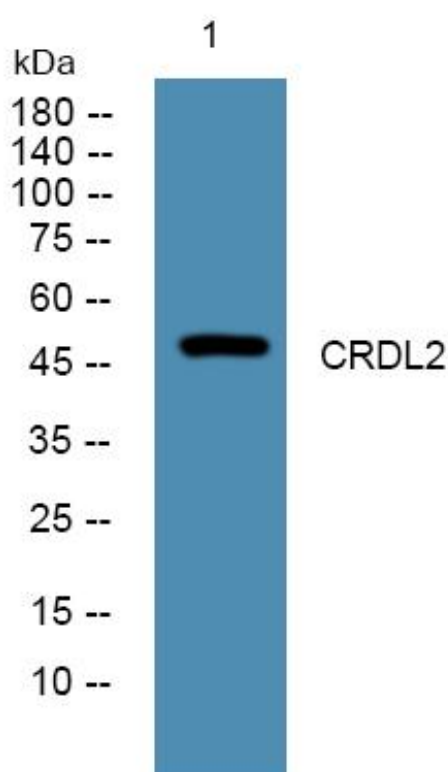
matters needing attention

Avoid repeated freezing and thawing!

Usage suggestions

This product can be used in immunological reaction related experiments. For more information, please consult technical personnel.

Products Images



Western Blot analysis of various cells using CRDL2 Monoclonal Antibody

Nanjing BYabscience technology Co.,Ltd

网址: www.njbybio.com

官方热线: 025-5229-8998

监督电话: 15950492658