



DKKL1 Monoclonal Antibody

Catalog No	BYmab-07109
Isotype	IgG
Reactivity	Human;Mouse
Applications	WB
Gene Name	DKKL1 SGY1 UNQ735/PRO1429
Protein Name	Dickkopf-like protein 1 (Cancer/testis antigen 34) (CT34) (Protein soggy-1) (SGY-1)
Immunogen	Synthesized peptide derived from human protein . at AA range: 50-130
Specificity	DKKL1 Monoclonal Antibody detects endogenous levels of protein.
Formulation	Liquid in PBS containing 50% glycerol, and 0.02% sodium azide.
Source	Monoclonal, Mouse,IgG
Purification	The antibody was affinity-purified from mouse antiserum by affinity-chromatography using epitope-specific immunogen.
Dilution	WB 1:500-2000
Concentration	1 mg/ml
Purity	≥90%
Storage Stability	-20°C/1 year
Synonyms	
Observed Band	26kD
Cell Pathway	Secreted . Cytoplasmic vesicle, secretory vesicle, acrosome . Localized specifically to the crescent shaped acrosome at the apex of the sperm head. .
Tissue Specificity	More highly expressed in adult testis than in fetal testis. Exclusively expressed in the testis (at protein level). Intense expression in stages II, III and IV of spermatogenesis, whereas expression is lower in stage I.
Function	PTM:N-glycosylated.,similarity:To the N-terminal section of DKK-3.,
Background	The dickkopf protein family interacts with the Wnt signaling pathway and its members are characterized by two conserved cysteine-rich domains. This gene encodes a secreted protein that has low sequence similarity to the dickkopf-3 protein. Multiple alternatively spliced transcript variants encoding distinct isoforms have been found for this gene. [provided by RefSeq, Oct 2010],
matters needing attention	Avoid repeated freezing and thawing!

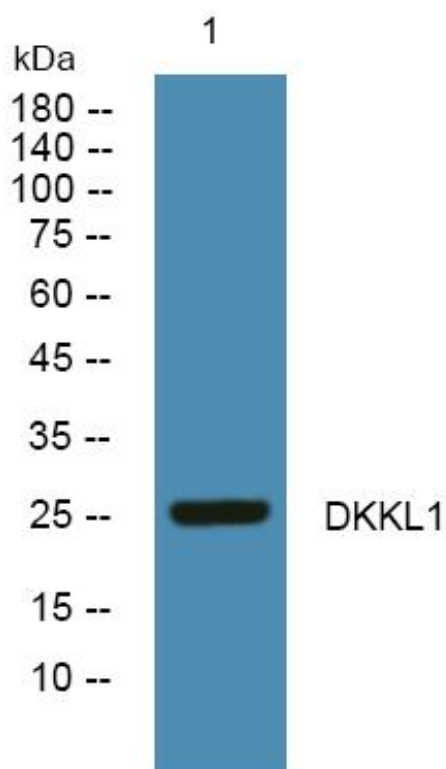
Nanjing BYabscience technology Co.,Ltd



Usage suggestions

This product can be used in immunological reaction related experiments. For more information, please consult technical personnel.

Products Images



Western Blot analysis of various cells using DKKL1 Monoclonal Antibody

Nanjing BYabs science technology Co.,Ltd

网址: www.njbybio.com

官方热线: 025-5229-8998

监督电话: 15950492658