



# S10AC Monoclonal Antibody

<b>Catalog No</b>	BYmab-07108
<b>Isotype</b>	IgG
<b>Reactivity</b>	Human;Rat;Mouse;
<b>Applications</b>	WB
<b>Gene Name</b>	S100A12
<b>Protein Name</b>	Protein S100-A12 (CGRP) (Calcium-binding protein in amniotic fluid 1) (CAAF1) (Calgranulin-C) (CAGC) (Extracellular newly identified RAGE-binding protein) (EN-RAGE) (Migration inhibitory factor-relate
<b>Immunogen</b>	Synthesized peptide derived from human protein . at AA range: 1-80
<b>Specificity</b>	S10AC Monoclonal Antibody detects endogenous levels of protein.
<b>Formulation</b>	Liquid in PBS containing 50% glycerol, and 0.02% sodium azide.
<b>Source</b>	Monoclonal, Mouse,IgG
<b>Purification</b>	The antibody was affinity-purified from mouse antiserum by affinity-chromatography using epitope-specific immunogen.
<b>Dilution</b>	WB 1:500-2000
<b>Concentration</b>	1 mg/ml
<b>Purity</b>	≥90%
<b>Storage Stability</b>	-20°C/1 year
<b>Synonyms</b>	
<b>Observed Band</b>	10kD
<b>Cell Pathway</b>	Secreted . Cytoplasm . Cytoplasm, cytoskeleton . Cell membrane ; Peripheral membrane protein . Predominantly localized in the cytoplasm. Upon elevation of the intracellular calcium level, translocated from the cytoplasm to the cytoskeleton and the cell membrane. Upon neutrophil activation is secreted via a microtubule-mediated, alternative pathway.
<b>Tissue Specificity</b>	Predominantly expressed by neutrophils, monocytes and activated macrophages. Expressed by eosinophils and macrophages in asthmatic airways in regions where mast cells accumulate. Found in high concentrations in the serum of patients suffering from various inflammatory disorders, such as rheumatoid arthritis, psoriatic arthritis, Crohn's disease, ulcerative colitis, and Kawasaki disease.
<b>Function</b>	function:Calcitermin possesses antifungal activity against C.albicans and is also active against E.coli and P.aeruginosa but not L.monocytogenes and S.aureus.,mass spectrometry: PubMed:11522286,similarity:Belongs to the S-101

**Nanjing BYabscience technology Co.,Ltd**



family.,similarity:Contains 2 EF-hand domains.,subunit:Homodimer.,tissue specificity:Monocytes and lymphocytes.,

## Background

The protein encoded by this gene is a member of the S100 family of proteins containing 2 EF-hand calcium-binding motifs. S100 proteins are localized in the cytoplasm and/or nucleus of a wide range of cells, and involved in the regulation of a number of cellular processes such as cell cycle progression and differentiation. S100 genes include at least 13 members which are located as a cluster on chromosome 1q21. This protein is proposed to be involved in specific calcium-dependent signal transduction pathways and its regulatory effect on cytoskeletal components may modulate various neutrophil activities. The protein includes an antimicrobial peptide which has antibacterial activity. [provided by RefSeq, Nov 2014],

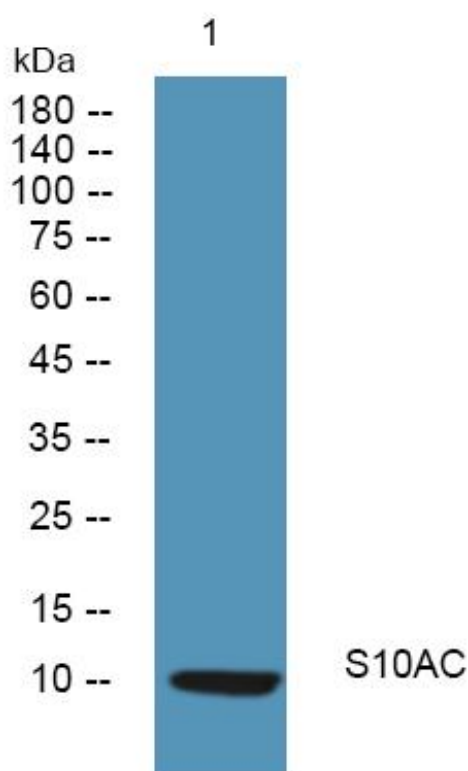
## matters needing attention

Avoid repeated freezing and thawing!

## Usage suggestions

This product can be used in immunological reaction related experiments. For more information, please consult technical personnel.

## Products Images



Western Blot analysis of various cells using S10AC Monoclonal Antibody

Nanjing BYabscience technology Co.,Ltd

网址: [www.njbybio.com](http://www.njbybio.com)

官方热线: 025-5229-8998

监督电话: 15950492658