



HEPS Monoclonal Antibody

Catalog No	BYmab-07105
Isotype	IgG
Reactivity	Human;Rat;Mouse
Applications	WB
Gene Name	HPN TMPRSS1
Protein Name	Serine protease hepsin (EC 3.4.21.106) (Transmembrane protease serine 1) [Cleaved into: Serine protease hepsin non-catalytic chain; Serine protease hepsin catalytic chain]
Immunogen	Synthesized peptide derived from human protein . at AA range: 350-430
Specificity	HEPS Monoclonal Antibody detects endogenous levels of protein.
Formulation	Liquid in PBS containing 50% glycerol, and 0.02% sodium azide.
Source	Monoclonal, Mouse,IgG
Purification	The antibody was affinity-purified from mouse antiserum by affinity-chromatography using epitope-specific immunogen.
Dilution	WB 1:500-2000
Concentration	1 mg/ml
Purity	≥90%
Storage Stability	-20°C/1 year
Synonyms	
Observed Band	45kD
Cell Pathway	Cell membrane ; Single-pass type II membrane protein . Apical cell membrane ; Single-pass type II membrane protein .
Tissue Specificity	Detected in liver and kidney.
Function	catalytic activity:Cleavage after basic amino-acid residues, with Arg strongly preferred to Lys.,function:Plays an essential role in cell growth and maintenance of cell morphology.,similarity:Belongs to the peptidase S1 family.,similarity:Contains 1 peptidase S1 domain.,similarity:Contains 1 SRCR domain.,tissue specificity:Present in most tissues, with the highest level in liver.,
Background	This gene encodes a type II transmembrane serine protease that may be involved in diverse cellular functions, including blood coagulation and the maintenance of cell morphology. Expression of the encoded protein is associated with the growth and progression of cancers, particularly prostate cancer. The protein is cleaved into a catalytic serine protease chain and a non-catalytic

Nanjing BYabscience technology Co.,Ltd



scavenger receptor cysteine-rich chain, which associate via a single disulfide bond. Alternative splicing results in multiple transcript variants. [provided by RefSeq, Jan 2013],

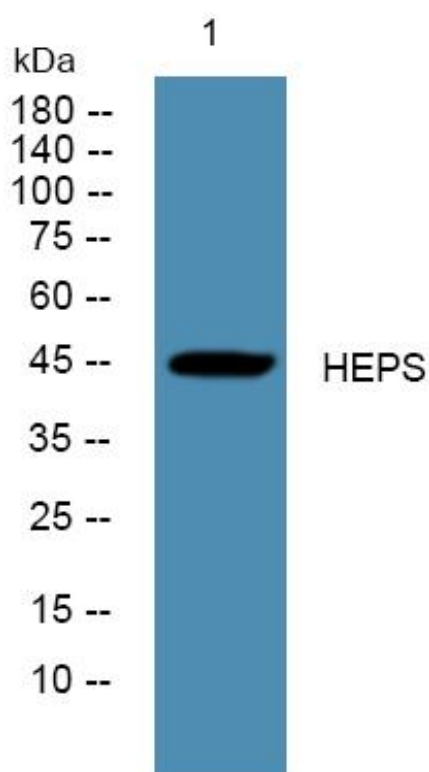
matters needing attention

Avoid repeated freezing and thawing!

Usage suggestions

This product can be used in immunological reaction related experiments. For more information, please consult technical personnel.

Products Images



Western Blot analysis of various cells using HEPS Monoclonal Antibody