



CRIS3 Monoclonal Antibody

Catalog No	BYmab-07104
Isotype	IgG
Reactivity	Human;Mouse
Applications	WB
Gene Name	CRISP3
Protein Name	Cysteine-rich secretory protein 3 (CRISP-3) (Specific granule protein of 28 kDa) (SGP28)
Immunogen	Synthesized peptide derived from human protein . at AA range: 30-110
Specificity	CRIS3 Monoclonal Antibody detects endogenous levels of protein.
Formulation	Liquid in PBS containing 50% glycerol, and 0.02% sodium azide.
Source	Monoclonal, Mouse,IgG
Purification	The antibody was affinity-purified from mouse antiserum by affinity-chromatography using epitope-specific immunogen.
Dilution	WB 1:500-2000
Concentration	1 mg/ml
Purity	≥90%
Storage Stability	-20°C/1 year
Synonyms	
Observed Band	26kD
Cell Pathway	Secreted. In neutrophils, localized in specific granules.
Tissue Specificity	Salivary gland, pancreas and prostate > epididymis, ovary, thymus and colon.
Function	similarity:Belongs to the CRISP family.,subcellular location:In neutrophils, localized in specific granules.,tissue specificity:Salivary gland, pancreas and prostate > epididymis, ovary, thymus and colon.,
Background	similarity:Belongs to the CRISP family.,subcellular location:In neutrophils, localized in specific granules.,tissue specificity:Salivary gland, pancreas and prostate > epididymis, ovary, thymus and colon.,
matters needing attention	Avoid repeated freezing and thawing!

Nanjing BYabscience technology Co.,Ltd

网址: www.njbybio.com

官方热线: 025-5229-8998

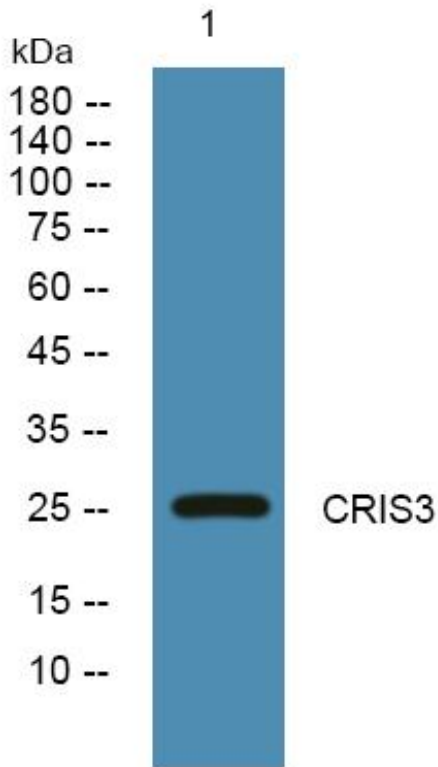
监督电话: 15950492658



Usage suggestions

This product can be used in immunological reaction related experiments. For more information, please consult technical personnel.

Products Images



Western Blot analysis of various cells using CRIS3 Monoclonal Antibody