



# ITLN1 Monoclonal Antibody

Catalog No	BYmab-07100
Isotype	IgG
Reactivity	Human;Rat;Mouse;
Applications	WB
Gene Name	ITLN1 INTL ITLN LFR UNQ640/PRO1270
Protein Name	Intelectin-1 (ITLN-1) (Endothelial lectin HL-1) (Galactofuranose-binding lectin) (Intestinal lactoferrin receptor) (Omentin)
Immunogen	Synthesized peptide derived from human protein . at AA range: 110-190
Specificity	ITLN1 Monoclonal Antibody detects endogenous levels of protein.
Formulation	Liquid in PBS containing 50% glycerol, and 0.02% sodium azide.
Source	Monoclonal, Mouse,IgG
Purification	The antibody was affinity-purified from mouse antiserum by affinity-chromatography using epitope-specific immunogen.
Dilution	WB 1:500-2000
Concentration	1 mg/ml
Purity	≥90%
Storage Stability	-20°C/1 year
Synonyms	
Observed Band	34kD
Cell Pathway	Cell membrane ; Lipid-anchor, GPI-anchor . Secreted . Enriched in lipid rafts. .
Tissue Specificity	Highly expressed in omental adipose tissue where it is found in stromal vascular cells but not in fat cells but is barely detectable in subcutaneous adipose tissue (at protein level) (PubMed:16531507). Highly expressed in the small intestine. Also found in the heart, testis, colon, salivary gland, skeletal muscle, pancreas and thyroid and, to a lesser degree, in the uterus, spleen, prostate, lymph node and thymus.
Function	developmental stage:Found in fetal small intestine and thymus.,function:Has no effect on basal glucose uptake but enhances insulin-stimulated glucose uptake in adipocytes. Increases AKT phosphorylation in the absence and presence of insulin. May play a role in the defense system against microorganisms. May specifically recognize carbohydrate chains of pathogens and bacterial components containing galactofuranosyl residues, in a calcium-dependent manner. May be involved in iron metabolism.,mass spectrometry:

Nanjing BYabscience technology Co.,Ltd



PubMed:17621593,PTM:N-glycosylated.,similarity:Contains 1 fibrinogen C-terminal domain.,subcellular location:Enriched in lipid rafts.,subunit:Homotrimer; disulfide-linked.,tissue specificity:Highly expressed in omental adipose tissue where it is found in stromal vascular cells but not in fat cells but is barely detectable in subcutaneous adipose tissue (at protein level). Highly expre

#### Background

developmental stage:Found in fetal small intestine and thymus.,function:Has no effect on basal glucose uptake but enhances insulin-stimulated glucose uptake in adipocytes. Increases AKT phosphorylation in the absence and presence of insulin. May play a role in the defense system against microorganisms. May specifically recognize carbohydrate chains of pathogens and bacterial components containing galactofuranosyl residues, in a calcium-dependent manner. May be involved in iron metabolism.,mass spectrometry:PubMed:17621593,PTM:N-glycosylated.,similarity:Contains 1 fibrinogen C-terminal domain.,subcellular location:Enriched in lipid rafts.,subunit:Homotrimer; disulfide-linked.,tissue specificity:Highly expressed in omental adipose tissue where it is found in stromal vascular cells but not in fat cells but is barely detectable in subcutaneous adipose tissue (at protein level). Highly expressed in the small intestine. Also found in the heart, testis, colon, salivary gland, skeletal muscle, pancreas and thyroid and, to a lesser degree, in the uterus, spleen, prostate, lymph node and thymus.,

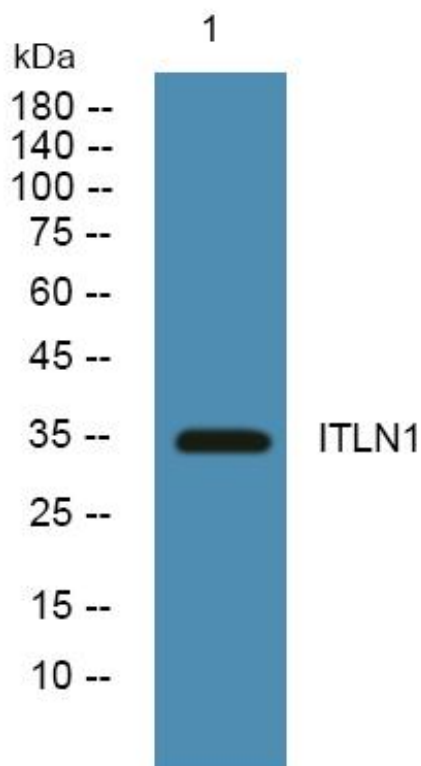
#### matters needing attention

Avoid repeated freezing and thawing!

#### Usage suggestions

This product can be used in immunological reaction related experiments. For more information, please consult technical personnel.

## Products Images



Western Blot analysis of various cells using ITLN1 Monoclonal Antibody

Nanjing BYabscience technology Co.,Ltd