



# FETUB Monoclonal Antibody

Catalog No	BYmab-07092
Isotype	IgG
Reactivity	Human;Rat;Mouse
Applications	WB
Gene Name	FETUB
Protein Name	Fetuin-B (16G2) (Fetuin-like protein IRL685) (Gugu)
Immunogen	Synthesized peptide derived from human protein . at AA range: 220-300
Specificity	FETUB Monoclonal Antibody detects endogenous levels of protein.
Formulation	Liquid in PBS containing 50% glycerol, and 0.02% sodium azide.
Source	Monoclonal, Mouse,IgG
Purification	The antibody was affinity-purified from mouse antiserum by affinity-chromatography using epitope-specific immunogen.
Dilution	WB 1:500-2000
Concentration	1 mg/ml
Purity	≥90%
Storage Stability	-20°C/1 year
Synonyms	
Observed Band	42kD
Cell Pathway	Secreted .
Tissue Specificity	Liver and testis.
Function	similarity:Belongs to the fetuin family.,similarity:Contains 2 cystatin domains.,tissue specificity:Liver and testis.,
Background	fetuin B(FETUB) Homo sapiens The protein encoded by this gene is a member of the fetuin family, part of the cystatin superfamily of cysteine protease inhibitors. Fetuins have been implicated in several diverse functions, including osteogenesis and bone resorption, regulation of the insulin and hepatocyte growth factor receptors, and response to systemic inflammation. This protein may be secreted by cells. [provided by RefSeq, Jul 2008],
matters needing attention	Avoid repeated freezing and thawing!

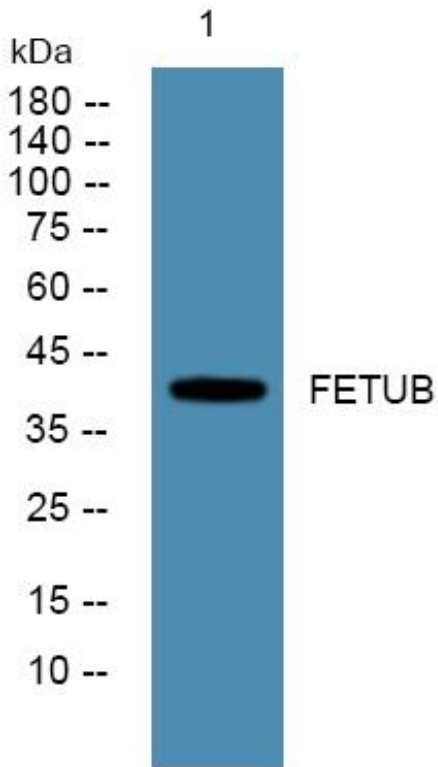
Nanjing BYabscience technology Co.,Ltd



### Usage suggestions

This product can be used in immunological reaction related experiments. For more information, please consult technical personnel.

## Products Images



Western Blot analysis of various cells using FETUB Monoclonal Antibody

Nanjing BYabs science technology Co.,Ltd

网址: [www.njbybio.com](http://www.njbybio.com)

官方热线: 025-5229-8998

监督电话: 15950492658