



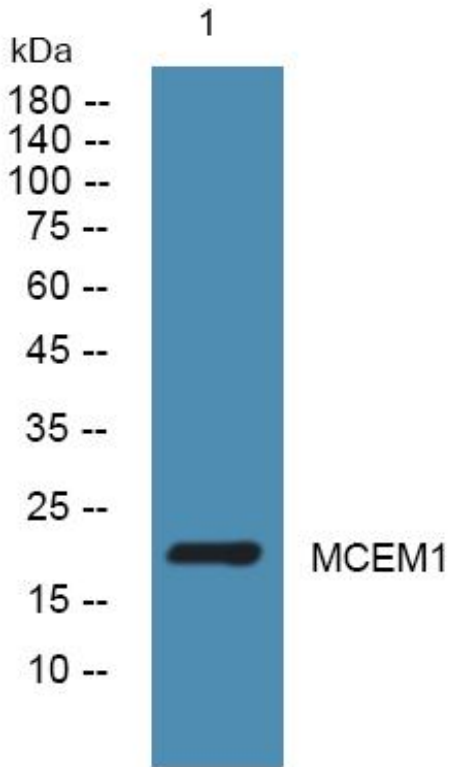
MCEM1 Monoclonal Antibody

Catalog No	BYmab-07081
Isotype	IgG
Reactivity	Human;Mouse
Applications	WB
Gene Name	MCEMP1 C19orf59
Protein Name	Mast cell-expressed membrane protein 1
Immunogen	Synthesized peptide derived from human protein . at AA range: 90-170
Specificity	MCEM1 Monoclonal Antibody detects endogenous levels of protein.
Formulation	Liquid in PBS containing 50% glycerol, and 0.02% sodium azide.
Source	Monoclonal, Mouse,IgG
Purification	The antibody was affinity-purified from mouse antiserum by affinity-chromatography using epitope-specific immunogen.
Dilution	WB 1:500-2000
Concentration	1 mg/ml
Purity	≥90%
Storage Stability	-20°C/1 year
Synonyms	
Observed Band	20kD
Cell Pathway	Membrane; Single-pass type II membrane protein.
Tissue Specificity	Expressed specifically in mast cells. Found primarily in lung.
Function	tissue specificity:Expressed specifically in mast cells. Found primarily in lung.,
Background	This gene encodes a single-pass transmembrane protein. Based on its expression pattern, it is speculated to be involved in regulating mast cell differentiation or immune responses. [provided by RefSeq, Jul 2008],
matters needing attention	Avoid repeated freezing and thawing!
Usage suggestions	This product can be used in immunological reaction related experiments. For more information, please consult technical personnel.

Nanjing BYabscience technology Co.,Ltd



Products Images



Nanjing BYabs science technology Co.,Ltd

网址: www.njbybio.com

官方热线: 025-5229-8998

监督电话: 15950492658