



LECT2 Monoclonal Antibody

Catalog No	BYmab-07066
Isotype	IgG
Reactivity	Human;Mouse
Applications	WB
Gene Name	LECT2
Protein Name	Leukocyte cell-derived chemotaxin-2 (LECT-2) (hLECT2)
Immunogen	Synthesized peptide derived from part region of human protein
Specificity	LECT2 Monoclonal Antibody detects endogenous levels of protein.
Formulation	Liquid in PBS containing 50% glycerol, and 0.02% sodium azide.
Source	Monoclonal, Mouse,IgG
Purification	The antibody was affinity-purified from mouse antiserum by affinity-chromatography using epitope-specific immunogen.
Dilution	WB 1:500-2000
Concentration	1 mg/ml
Purity	≥90%
Storage Stability	-20°C/1 year
Synonyms	
Observed Band	16kD
Cell Pathway	Cytoplasm . Secreted .
Tissue Specificity	Highly expressed in adult and fetal liver and weakly in testis. Not expressed in bone marrow.
Function	function:Has a neutrophil chemotactic activity. Also a positive regulator of chondrocyte proliferation.,induction:By phytohemagglutinin (PHA).,similarity:Belongs to the LECT2/MIM-1 family.,tissue specificity:Highly expressed in adult and fetal liver and weakly in testis. Not expressed in bone marrow.,
Background	This gene encodes a secreted, 16 kDa protein that acts as a chemotactic factor to neutrophils and stimulates the growth of chondrocytes and osteoblasts. This protein has high sequence similarity to the chondromodulin repeat regions of the chicken myb-induced myeloid 1 protein. A polymorphism in this gene may be associated with rheumatoid arthritis. [provided by RefSeq, Jul 2008],

Nanjing BYabscience technology Co.,Ltd



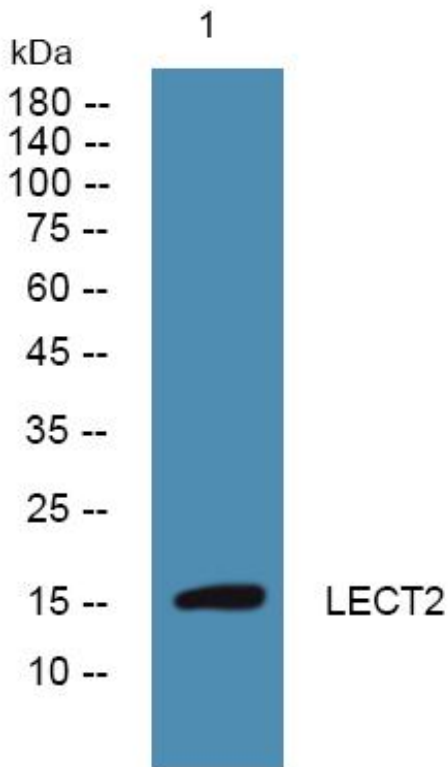
matters needing attention

Avoid repeated freezing and thawing!

Usage suggestions

This product can be used in immunological reaction related experiments. For more information, please consult technical personnel.

Products Images



Western Blot analysis of various cells using LECT2 Monoclonal Antibody