



CPIN1 Monoclonal Antibody

Catalog No	BYmab-07050
Isotype	IgG
Reactivity	Human;Rat;Mouse
Applications	WB
Gene Name	CIAPIN1 CUA001 PRO0915
Protein Name	Anamorsin (Cytokine-induced apoptosis inhibitor 1) (Fe-S cluster assembly protein DRE2 homolog)
Immunogen	Synthesized peptide derived from part region of human protein
Specificity	CPIN1 Monoclonal Antibody detects endogenous levels of protein.
Formulation	Liquid in PBS containing 50% glycerol, and 0.02% sodium azide.
Source	Monoclonal, Mouse,IgG
Purification	The antibody was affinity-purified from mouse antiserum by affinity-chromatography using epitope-specific immunogen.
Dilution	WB 1:500-2000
Concentration	1 mg/ml
Purity	≥90%
Storage Stability	-20°C/1 year
Synonyms	
Observed Band	34kD
Cell Pathway	Cytoplasm . Nucleus . Mitochondrion intermembrane space .
Tissue Specificity	Ubiquitously expressed. Highly expressed in heart, liver and pancreas.
Function	function:Probably required during hematopoiesis to mediate antiapoptotic effects of various cytokines. Confers resistance to apoptosis when overexpressed.,miscellaneous:'Ana-mors-in' means 'anti-death molecule' in Latin.,similarity:Belongs to the anamorsin family.,tissue specificity:Ubiquitously expressed. Highly expressed in heart, liver and pancreas.,
Background	cytokine induced apoptosis inhibitor 1(CIAPIN1) Homo sapiens CIAPIN1 is a cytokine-induced inhibitor of apoptosis with no relation to apoptosis regulatory molecules of the BCL2 (MIM 151430) or CASP (see MIM 147678) families. Expression of CIAPIN1 is dependent on growth factor stimulation (Shibayama et al., 2004 [PubMed 14970183]).[supplied by OMIM, Mar 2008],

Nanjing BYabscience technology Co.,Ltd



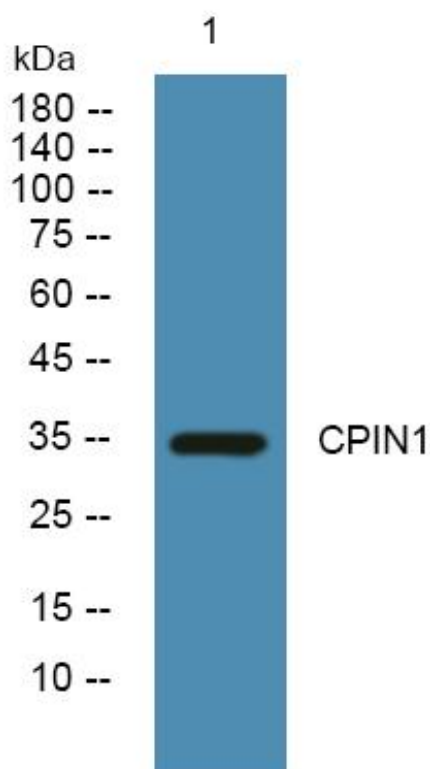
matters needing attention

Avoid repeated freezing and thawing!

Usage suggestions

This product can be used in immunological reaction related experiments. For more information, please consult technical personnel.

Products Images



Western Blot analysis of various cells using CPIN1 Monoclonal Antibody