



SIG14 Monoclonal Antibody

Catalog No	BYmab-07049
Isotype	IgG
Reactivity	Human;Rat;Mouse;
Applications	WB
Gene Name	SIGLEC14 UNQ294/PRO333
Protein Name	Sialic acid-binding Ig-like lectin 14 (Siglec-14)
Immunogen	Synthesized peptide derived from part region of human protein
Specificity	SIG14 Monoclonal Antibody detects endogenous levels of protein.
Formulation	Liquid in PBS containing 50% glycerol, and 0.02% sodium azide.
Source	Monoclonal, Mouse,IgG
Purification	The antibody was affinity-purified from mouse antiserum by affinity-chromatography using epitope-specific immunogen.
Dilution	WB 1:500-2000
Concentration	1 mg/ml
Purity	≥90%
Storage Stability	-20°C/1 year
Synonyms	
Observed Band	43kD
Cell Pathway	Cell membrane ; Single-pass type I membrane protein .
Tissue Specificity	Mainly expressed in hematopoietic tissues including bone marrow, spleen and fetal liver. Also detected in lung and testis.
Function	function:Putative adhesion molecule. Sialic acid-binding paired receptor which may activate associated receptors.,similarity:Belongs to the immunoglobulin superfamily. SIGLEC (sialic acid binding Ig-like lectin) family.,similarity:Contains 1 Ig-like V-type (immunoglobulin-like) domain.,similarity:Contains 2 Ig-like C2-type (immunoglobulin-like) domains.,subunit:Interacts with TYROBP.,tissue specificity:Mainly expressed in hematopoietic tissues including bone marrow, spleen and fetal liver. Also detected in lung and testis.,
Background	function:Putative adhesion molecule. Sialic acid-binding paired receptor which may activate associated receptors.,similarity:Belongs to the immunoglobulin superfamily. SIGLEC (sialic acid binding Ig-like lectin) family.,similarity:Contains 1 Ig-like V-type (immunoglobulin-like) domain.,similarity:Contains 2 Ig-like C2-type

Nanjing BYabscience technology Co.,Ltd



(immunoglobulin-like) domains.,subunit:Interacts with TYROBP.,tissue specificity:Mainly expressed in hematopoietic tissues including bone marrow, spleen and fetal liver. Also detected in lung and testis.,

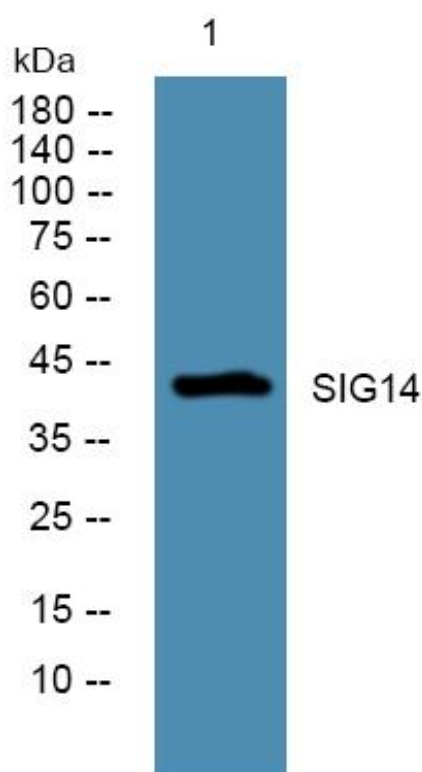
matters needing attention

Avoid repeated freezing and thawing!

Usage suggestions

This product can be used in immunological reaction related experiments. For more information, please consult technical personnel.

Products Images



Western Blot analysis of various cells using SIG14 Monoclonal Antibody