



# CLC1B Monoclonal Antibody

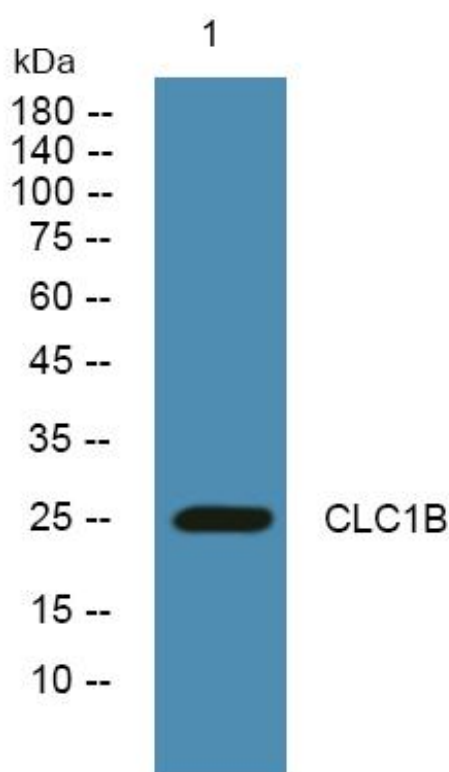
Catalog No	BYmab-07048
Isotype	IgG
Reactivity	Human;Mouse
Applications	WB
Gene Name	CLEC1B CLEC2 UNQ721/PRO1384
Protein Name	C-type lectin domain family 1 member B (C-type lectin-like receptor 2) (CLEC-2)
Immunogen	Synthesized peptide derived from part region of human protein
Specificity	CLC1B Monoclonal Antibody detects endogenous levels of protein.
Formulation	Liquid in PBS containing 50% glycerol, and 0.02% sodium azide.
Source	Monoclonal, Mouse,IgG
Purification	The antibody was affinity-purified from mouse antiserum by affinity-chromatography using epitope-specific immunogen.
Dilution	WB 1:500-2000
Concentration	1 mg/ml
Purity	≥90%
Storage Stability	-20°C/1 year
Synonyms	
Observed Band	25kD
Cell Pathway	Membrane ; Single-pass type II membrane protein .
Tissue Specificity	Expressed preferentially in the liver. Also expressed in immune cells of myeloid origin and on the surface of platelets.
Function	function:Acts as a receptor for the platelet-aggregating snake venom protein rhodocytin. Rhodocytin binding leads to tyrosine phosphorylation and this promotes the binding of spleen tyrosine kinase (Syk) and initiation of downstream tyrosine phosphorylation events and activation of PLC-gamma-2. Acts as an attachment factor for human immunodeficiency virus type 1 (HIV-1) and facilitates its capture by platelets.,online information:CLEC-2,PTM:Glycosylated.,PTM:Phosphorylated on tyrosine residue in response to rhodocytin binding.,similarity:Contains 1 C-type lectin domain.,subunit:Monomer.,tissue specificity:Expressed preferentially in the liver. Also expressed in immune cells of myeloid origin and on the surface of platelets.,

Nanjing BYabscience technology Co.,Ltd



<b>Background</b>	Natural killer (NK) cells express multiple calcium-dependent (C-type) lectin-like receptors, such as CD94 (KLRD1; MIM 602894) and NKG2D (KLRC4; MIM 602893), that interact with major histocompatibility complex class I molecules and either inhibit or activate cytotoxicity and cytokine secretion. CLEC2 is a C-type lectin-like receptor expressed in myeloid cells and NK cells (Colonna et al., 2000 [PubMed 10671229]).[supplied by OMIM, Jan 2011],
<b>matters needing attention</b>	Avoid repeated freezing and thawing!
<b>Usage suggestions</b>	This product can be used in immunological reaction related experiments. For more information, please consult technical personnel.

## Products Images



Western Blot analysis of various cells using CLC1B Monoclonal Antibody