



FAM3A Monoclonal Antibody

Catalog No	BYmab-07025
Isotype	IgG
Reactivity	Human;Mouse
Applications	WB
Gene Name	FAM3A 2-19 2.19
Protein Name	Protein FAM3A (Cytokine-like protein 2-19)
Immunogen	Synthesized peptide derived from part region of human protein
Specificity	FAM3A Monoclonal Antibody detects endogenous levels of protein.
Formulation	Liquid in PBS containing 50% glycerol, and 0.02% sodium azide.
Source	Monoclonal, Mouse,IgG
Purification	The antibody was affinity-purified from mouse antiserum by affinity-chromatography using epitope-specific immunogen.
Dilution	WB 1:500-2000
Concentration	1 mg/ml
Purity	≥90%
Storage Stability	-20°C/1 year
Synonyms	
Observed Band	25kD
Cell Pathway	Secreted .
Tissue Specificity	In similar amounts in testis, pancreas, adrenal, placenta, brain, fetal brain, liver, kidney, skeletal muscle and heart.
Function	similarity:Belongs to the FAM3 family.,tissue specificity:In similar amounts in testis, pancreas, adrenal, placenta, brain, fetal brain, liver, kidney, skeletal muscle and heart.,
Background	This gene encodes a cytokine-like protein. The expression of this gene may be regulated by peroxisome proliferator-activated receptor gamma, and the encoded protein may be involved in the regulation of glucose and lipid metabolism. Alternative splicing results in multiple transcript variants. [provided by RefSeq, Aug 2013],
matters needing attention	Avoid repeated freezing and thawing!

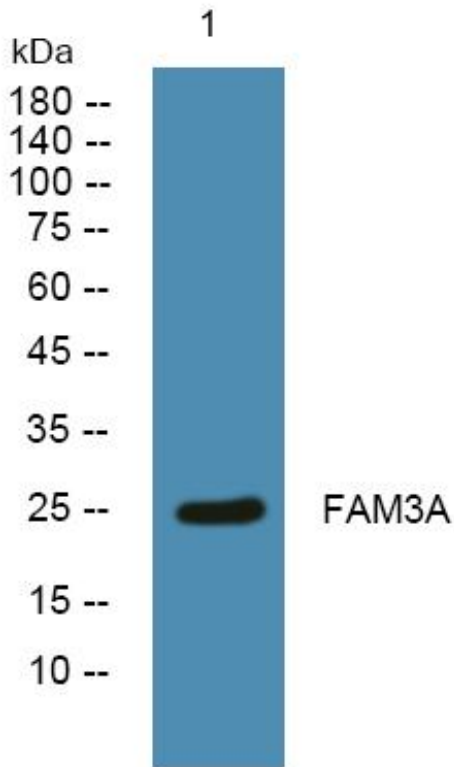
Nanjing BYabscience technology Co.,Ltd



Usage suggestions

This product can be used in immunological reaction related experiments. For more information, please consult technical personnel.

Products Images



Western Blot analysis of various cells using FAM3A Monoclonal Antibody

Nanjing BYabs science technology Co.,Ltd

网址: www.njbybio.com

官方热线: 025-5229-8998

监督电话: 15950492658