



PGS2 Monoclonal Antibody

Catalog No	BYmab-07017
Isotype	IgG
Reactivity	Human;Rat;Mouse
Applications	WB
Gene Name	DCN SLRR1B
Protein Name	Decorin (Bone proteoglycan II) (PG-S2) (PG40)
Immunogen	Synthesized peptide derived from part region of human protein
Specificity	PGS2 Monoclonal Antibody detects endogenous levels of protein.
Formulation	Liquid in PBS containing 50% glycerol, and 0.02% sodium azide.
Source	Monoclonal, Mouse,IgG
Purification	The antibody was affinity-purified from mouse antiserum by affinity-chromatography using epitope-specific immunogen.
Dilution	WB 1:500-2000
Concentration	1 mg/ml
Purity	≥90%
Storage Stability	-20°C/1 year
Synonyms	
Observed Band	39kD
Cell Pathway	Secreted, extracellular space, extracellular matrix.
Tissue Specificity	Liver,Lung,Small intestine,Tongue,
Function	disease:Defects in DCN are the cause of congenital stromal corneal dystrophy (CSCD) [MIM:610048]. Corneal dystrophies are inherited, bilateral, primary alterations of the cornea that are not associated with prior inflammation or secondary to systemic disease. Most show autosomal dominant inheritance.,function:May affect the rate of fibrils formation.,PTM:The attached glycosaminoglycan chain can be either chondroitin sulfate or dermatan sulfate depending upon the tissue of origin.,similarity:Belongs to the small leucine-rich proteoglycan (SLRP) family. Class I subfamily.,similarity:Contains 12 LRR (leucine-rich) repeats.,subunit:Binds to type I and type II collagen, fibronectin and TGF-beta. Forms a ternary complex with MFAP2 and ELN. Interacts with DPT.,

Nanjing BYabscience technology Co.,Ltd



Background

This gene encodes a member of the small leucine-rich proteoglycan family of proteins. Alternative splicing results in multiple transcript variants, at least one of which encodes a preproprotein that is proteolytically processed to generate the mature protein. This protein plays a role in collagen fibril assembly. Binding of this protein to multiple cell surface receptors mediates its role in tumor suppression, including a stimulatory effect on autophagy and inflammation and an inhibitory effect on angiogenesis and tumorigenesis. This gene and the related gene biglycan are thought to be the result of a gene duplication. Mutations in this gene are associated with congenital stromal corneal dystrophy in human patients. [provided by RefSeq, Nov 2015],

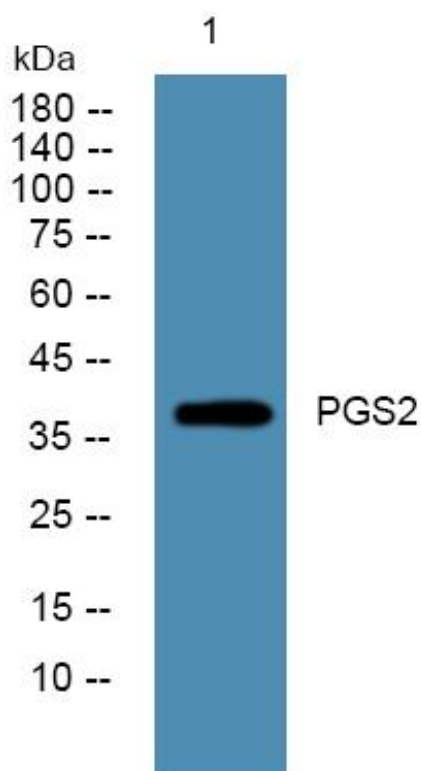
matters needing attention

Avoid repeated freezing and thawing!

Usage suggestions

This product can be used in immunological reaction related experiments. For more information, please consult technical personnel.

Products Images



Western Blot analysis of various cells using PGS2 Monoclonal Antibody

Nanjing BYabscience technology Co.,Ltd

网址: www.njbybio.com

官方热线: 025-5229-8998

监督电话: 15950492658