



# CLC5A Monoclonal Antibody

<b>Catalog No</b>	BYmab-07015
<b>Isotype</b>	IgG
<b>Reactivity</b>	Human;Mouse
<b>Applications</b>	WB
<b>Gene Name</b>	CLEC5A CLECSF5 MDL1
<b>Protein Name</b>	C-type lectin domain family 5 member A (C-type lectin superfamily member 5) (Myeloid DAP12-associating lectin 1) (MDL-1)
<b>Immunogen</b>	Synthesized peptide derived from part region of human protein
<b>Specificity</b>	CLC5A Monoclonal Antibody detects endogenous levels of protein.
<b>Formulation</b>	Liquid in PBS containing 50% glycerol, and 0.02% sodium azide.
<b>Source</b>	Monoclonal, Mouse,IgG
<b>Purification</b>	The antibody was affinity-purified from mouse antiserum by affinity-chromatography using epitope-specific immunogen.
<b>Dilution</b>	WB 1:500-2000
<b>Concentration</b>	1 mg/ml
<b>Purity</b>	≥90%
<b>Storage Stability</b>	-20°C/1 year
<b>Synonyms</b>	
<b>Observed Band</b>	20kD
<b>Cell Pathway</b>	Cell membrane ; Single-pass type II membrane protein .
<b>Tissue Specificity</b>	Highly expressed in bone marrow with lower levels in synovium, lung and bronchus (PubMed:20212065). Expressed in peripheral blood monocytes and in the monocyte/macrophage cell lines U-937 and Mono-Mac-6, but not in cell lines of other origins (PubMed:10449773). Expression is down-regulated when monocytes differentiate into dendritic cells (PubMed:10449773).
<b>Function</b>	function:May be involved in proinflammatory activation of myeloid cells via TYROBP-mediated signaling in a calcium-dependent manner.,online information:MDL-1,similarity:Contains 1 C-type lectin domain.,subunit:Interacts with TYROBP.,tissue specificity:Expressed in peripheral blood monocytes and in the monocyte/macrophage cell lines U937 and MonoMac6, but not in cell lines of other origins. Expression is down-regulated when monocytes differentiate into dendritic cells.,

**Nanjing BYabscience technology Co.,Ltd**



## Background

This gene encodes a member of the C-type lectin/C-type lectin-like domain (CTL/CTLD) superfamily. Members of this family share a common protein fold and have diverse functions, such as cell adhesion, cell-cell signalling, glycoprotein turnover, and roles in inflammation and immune response. The encoded type II transmembrane protein interacts with dnax-activation protein 12 and may play a role in cell activation. Alternative splice variants have been described but their full-length sequence has not been determined. [provided by RefSeq, Jul 2008],

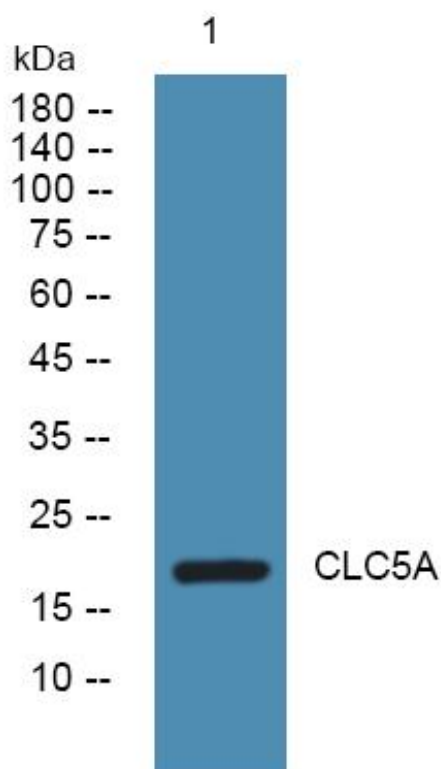
## matters needing attention

Avoid repeated freezing and thawing!

## Usage suggestions

This product can be used in immunological reaction related experiments. For more information, please consult technical personnel.

## Products Images



Western Blot analysis of various cells using CLC5A Monoclonal Antibody