



KLK5 Monoclonal Antibody

Catalog No	BYmab-07013
Isotype	IgG
Reactivity	Human;Rat;Mouse;
Applications	WB
Gene Name	KLK5 SCTE UNQ570/PRO1132
Protein Name	Kallikrein-5 (EC 3.4.21.-) (Kallikrein-like protein 2) (KLK-L2) (Stratum corneum tryptic enzyme)
Immunogen	Synthesized peptide derived from part region of human protein
Specificity	KLK5 Monoclonal Antibody detects endogenous levels of protein.
Formulation	Liquid in PBS containing 50% glycerol, and 0.02% sodium azide.
Source	Monoclonal, Mouse,IgG
Purification	The antibody was affinity-purified from mouse antiserum by affinity-chromatography using epitope-specific immunogen.
Dilution	WB 1:500-2000
Concentration	1 mg/ml
Purity	≥90%
Storage Stability	-20°C/1 year
Synonyms	
Observed Band	32kD
Cell Pathway	Secreted.
Tissue Specificity	Expressed in skin, breast, brain and testis. Expressed at the stratum granulosum of palmar skin.
Function	function:May be involved in desquamation.,similarity:Belongs to the peptidase S1 family.,similarity:Belongs to the peptidase S1 family. Kallikrein subfamily.,similarity:Contains 1 peptidase S1 domain.,tissue specificity:Expressed in skin, breast, brain and testis.,
Background	Kallikreins are a subgroup of serine proteases having diverse physiological functions. Growing evidence suggests that many kallikreins are implicated in carcinogenesis and some have potential as novel cancer and other disease biomarkers. This gene is one of the fifteen kallikrein subfamily members located in a cluster on chromosome 19. Its expression is up-regulated by estrogens and progestins. The encoded protein is secreted and may be involved in desquamation in the epidermis. Alternative splicing results in multiple transcript

Nanjing BYabscience technology Co.,Ltd



variants encoding the same protein. [provided by RefSeq, Jul 2008],

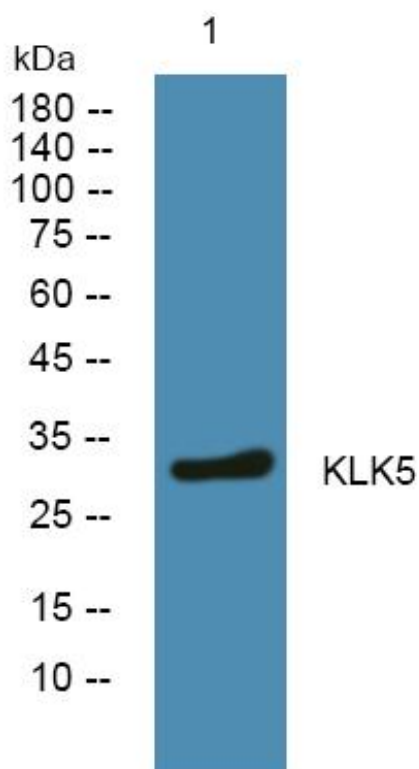
matters needing attention

Avoid repeated freezing and thawing!

Usage suggestions

This product can be used in immunological reaction related experiments. For more information, please consult technical personnel.

Products Images



Western Blot analysis of various cells using KLK5 Monoclonal Antibody

Nanjing BYabs science technology Co.,Ltd

网址: www.njbybio.com

官方热线: 025-5229-8998

监督电话: 15950492658