



# AMPM1 Monoclonal Antibody

<b>Catalog No</b>	BYmab-07010
<b>Isotype</b>	IgG
<b>Reactivity</b>	Human;Mouse
<b>Applications</b>	WB
<b>Gene Name</b>	METAP1 KIAA0094
<b>Protein Name</b>	Methionine aminopeptidase 1 (MAP 1) (MetAP 1) (EC 3.4.11.18) (Peptidase M 1)
<b>Immunogen</b>	Synthesized peptide derived from part region of human protein
<b>Specificity</b>	AMPM1 Monoclonal Antibody detects endogenous levels of protein.
<b>Formulation</b>	Liquid in PBS containing 50% glycerol, and 0.02% sodium azide.
<b>Source</b>	Monoclonal, Mouse,IgG
<b>Purification</b>	The antibody was affinity-purified from mouse antiserum by affinity-chromatography using epitope-specific immunogen.
<b>Dilution</b>	WB 1:500-2000
<b>Concentration</b>	1 mg/ml
<b>Purity</b>	≥90%
<b>Storage Stability</b>	-20°C/1 year
<b>Synonyms</b>	
<b>Observed Band</b>	42kD
<b>Cell Pathway</b>	Cytoplasm .
<b>Tissue Specificity</b>	Bone marrow,Placenta,Testis,
<b>Function</b>	catalytic activity:Release of N-terminal amino acids, preferentially methionine, from peptides and arylamides.,cofactor:Binds 1 sodium ion per subunit. The sodium ion has a structural role.,cofactor:Binds 2 cobalt ions per subunit.,cofactor:Binds 2 cobalt ions per subunit. The true nature of the physiological cofactor is under debate. The enzyme is also active with zinc, manganese or divalent iron ions.,function:Removes the amino-terminal methionine from nascent proteins.,function:Removes the amino-terminal methionine from nascent proteins. Required for normal progression through the cell cycle.,similarity:Belongs to the peptidase M24A family.,
<b>Background</b>	catalytic activity:Release of N-terminal amino acids, preferentially methionine, from peptides and arylamides.,cofactor:Binds 1 sodium ion per subunit. The

**Nanjing BYabscience technology Co.,Ltd**



sodium ion has a structural role.,cofactor: Binds 2 cobalt ions per subunit.,cofactor: Binds 2 cobalt ions per subunit. The true nature of the physiological cofactor is under debate. The enzyme is also active with zinc, manganese or divalent iron ions.,function: Removes the amino-terminal methionine from nascent proteins.,function: Removes the amino-terminal methionine from nascent proteins. Required for normal progression through the cell cycle.,similarity: Belongs to the peptidase M24A family.,

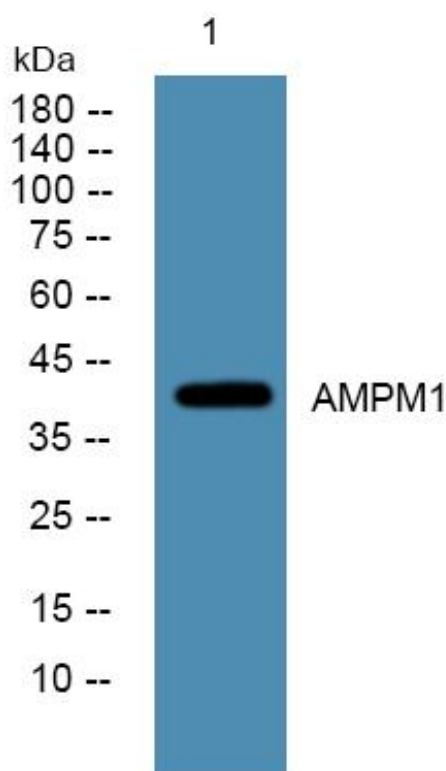
**matters needing attention**

Avoid repeated freezing and thawing!

**Usage suggestions**

This product can be used in immunological reaction related experiments. For more information, please consult technical personnel.

## Products Images



Western Blot analysis of various cells using AMPM1 Monoclonal Antibody