



# DKK2 Monoclonal Antibody

<b>Catalog No</b>	BYmab-06992
<b>Isotype</b>	IgG
<b>Reactivity</b>	Human;Mouse
<b>Applications</b>	WB
<b>Gene Name</b>	DKK2 UNQ682/PRO1316
<b>Protein Name</b>	Dickkopf-related protein 2 (Dickkopf-2) (Dkk-2) (hDkk-2)
<b>Immunogen</b>	Synthesized peptide derived from part region of human protein
<b>Specificity</b>	DKK2 Monoclonal Antibody detects endogenous levels of protein.
<b>Formulation</b>	Liquid in PBS containing 50% glycerol, and 0.02% sodium azide.
<b>Source</b>	Monoclonal, Mouse,IgG
<b>Purification</b>	The antibody was affinity-purified from mouse antiserum by affinity-chromatography using epitope-specific immunogen.
<b>Dilution</b>	WB 1:500-2000
<b>Concentration</b>	1 mg/ml
<b>Purity</b>	≥90%
<b>Storage Stability</b>	-20°C/1 year
<b>Synonyms</b>	
<b>Observed Band</b>	28kD
<b>Cell Pathway</b>	Secreted.
<b>Tissue Specificity</b>	Expressed in heart, brain, skeletal muscle and lung.
<b>Function</b>	function:Inhibitor of Wnt signaling pathway .,PTM:May be proteolytically processed by a furin-like protease.,similarity:Belongs to the dickkopf family.,tissue specificity:Expressed in heart, brain, skeletal muscle and lung.,
<b>Background</b>	This gene encodes a protein that is a member of the dickkopf family. The secreted protein contains two cysteine rich regions and is involved in embryonic development through its interactions with the Wnt signaling pathway. It can act as either an agonist or antagonist of Wnt/beta-catenin signaling, depending on the cellular context and the presence of the co-factor kremen 2. Activity of this protein is also modulated by binding to the Wnt co-receptor LDL-receptor related protein 6 (LRP6). [provided by RefSeq, Jul 2008],

**Nanjing BYabscience technology Co.,Ltd**



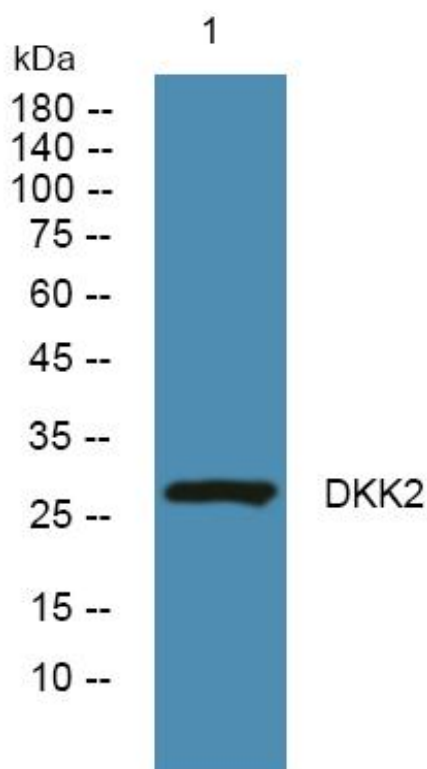
**matters needing attention**

Avoid repeated freezing and thawing!

**Usage suggestions**

This product can be used in immunological reaction related experiments. For more information, please consult technical personnel.

## Products Images



Western Blot analysis of various cells using DKK2 Monoclonal Antibody