



SEGN Monoclonal Antibody

Catalog No	BYmab-06961
Isotype	IgG
Reactivity	Human;Mouse;Rat
Applications	WB
Gene Name	SCGN SECRET
Protein Name	Secretagogin
Immunogen	Synthesized peptide derived from part region of human protein
Specificity	SEGN Monoclonal Antibody detects endogenous levels of protein.
Formulation	Liquid in PBS containing 50% glycerol, and 0.02% sodium azide.
Source	Monoclonal, Mouse,IgG
Purification	The antibody was affinity-purified from mouse antiserum by affinity-chromatography using epitope-specific immunogen.
Dilution	WB 1:500-2000
Concentration	1 mg/ml
Purity	≥90%
Storage Stability	-20°C/1 year
Synonyms	
Observed Band	30kD
Cell Pathway	Cytoplasm. Secreted . Cytoplasmic vesicle, secretory vesicle membrane ; Peripheral membrane protein ; Cytoplasmic side . Predominantly cytoplasmic. A small proportion is associated with secretory granules and membrane fractions (By similarity). Detectable in human serum after ischemic neuronal damage. .
Tissue Specificity	Expressed at high levels in the pancreatic islets of Langerhans and to a much lesser extent in the gastrointestinal tract (stomach, small intestine and colon), the adrenal medulla and cortex and the thyroid C-cells. In the brain, the expression is restricted to distinct subtypes of neurons with highest expression in the molecular layer of the cerebellum (stellate and basket cells), in the anterior part of the pituitary gland, in the thalamus, in the hypothalamus and in a subgroup of neocortical neurons.
Function	similarity:Contains 6 EF-hand domains.,subcellular location:Predominantly cytoplasmic. A small proportion is associated with secretory granules and membrane fractions (By similarity). Detectable in human serum after ischemic neuronal damage.,tissue specificity:Expressed at high levels in the pancreatic

Nanjing BYabscience technology Co.,Ltd



islets of Langerhans and to a much lesser extent in the gastrointestinal tract (stomach, small intestine and colon), the adrenal medulla and cortex and the thyroid C-cells. In the brain, the expression is restricted to distinct subtypes of neurons with highest expression in the molecular layer of the cerebellum (stellate and basket cells), in the anterior part of the pituitary gland, in the thalamus, in the hypothalamus and in a subgroup of neocortical neurons.,

Background

The encoded protein is a secreted calcium-binding protein which is found in the cytoplasm. It is related to calbindin D-28K and calretinin. This protein is thought to be involved in KCL-stimulated calcium flux and cell proliferation. [provided by RefSeq, Jul 2008],

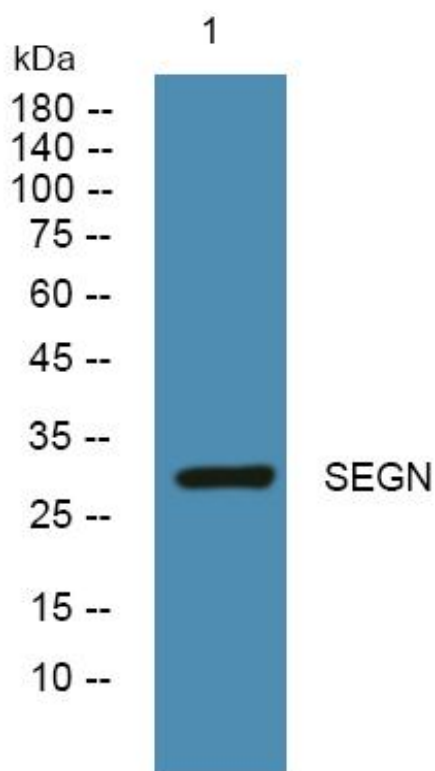
matters needing attention

Avoid repeated freezing and thawing!

Usage suggestions

This product can be used in immunological reaction related experiments. For more information, please consult technical personnel.

Products Images



Western Blot analysis of various cells using SEGN Monoclonal Antibody