



# BNIP3L Monoclonal Antibody

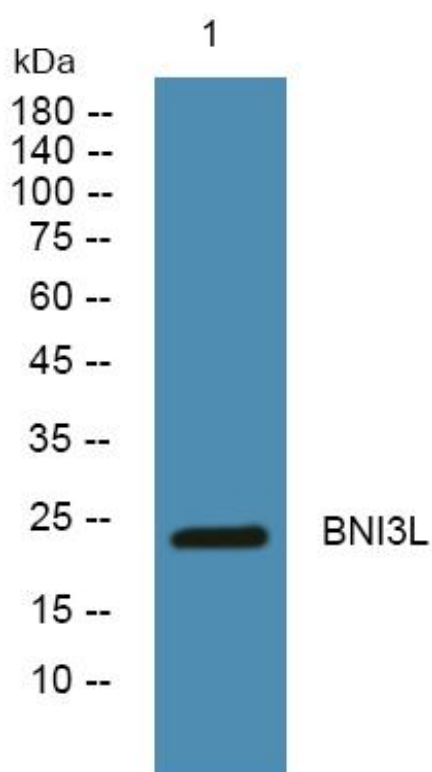
<b>Catalog No</b>	BYmab-06940
<b>Isotype</b>	IgG
<b>Reactivity</b>	Human;Mouse
<b>Applications</b>	WB
<b>Gene Name</b>	BNIP3L BNIP3A BNIP3H NIX
<b>Protein Name</b>	BCL2/adenovirus E1B 19 kDa protein-interacting protein 3-like (Adenovirus E1B19K-binding protein B5) (BCL2/adenovirus E1B 19 kDa protein-interacting protein 3A) (NIP3-like protein X) (NIP3L)
<b>Immunogen</b>	Synthesized peptide derived from part region of human protein
<b>Specificity</b>	BNIP3L Monoclonal Antibody detects endogenous levels of protein.
<b>Formulation</b>	Liquid in PBS containing 50% glycerol, and 0.02% sodium azide.
<b>Source</b>	Monoclonal, Mouse,IgG
<b>Purification</b>	The antibody was affinity-purified from mouse antiserum by affinity-chromatography using epitope-specific immunogen.
<b>Dilution</b>	WB 1:500-2000
<b>Concentration</b>	1 mg/ml
<b>Purity</b>	≥90%
<b>Storage Stability</b>	-20°C/1 year
<b>Synonyms</b>	
<b>Observed Band</b>	24kD
<b>Cell Pathway</b>	Nucleus envelope. Endoplasmic reticulum. Mitochondrion outer membrane. Membrane ; Single-pass membrane protein . Colocalizes with SPATA18 at the mitochondrion outer membrane.
<b>Tissue Specificity</b>	Bone marrow,Brain,Cervix,Epithelium,Fetal liver,Hair follicle dermal papill
<b>Function</b>	function:Induces apoptosis. Interacts with viral and cellular anti-apoptosis proteins. Can overcome the suppressors BCL-2 and BCL-XL, although high levels of BCL-XL expression will inhibit apoptosis. May function as a tumor suppressor. Inhibits apoptosis induced by BNIP3.,PTM:Undergoes progressive proteolysis to an 11 kDa C-terminal fragment, which is blocked by the proteasome inhibitor lactacystin.,similarity:Belongs to the NIP3 family.,subunit:Self-associates. Interacts with BNIP3 and STEAP3. Interacts with human adenovirus-2 E1B 19 kDa protein.,

**Nanjing BYabscience technology Co.,Ltd**



<b>Background</b>	BCL2 interacting protein 3 like(BNIP3L) Homo sapiens This gene encodes a protein that belongs to the pro-apoptotic subfamily within the Bcl-2 family of proteins. The encoded protein binds to Bcl-2 and possesses the BH3 domain. The protein directly targets mitochondria and causes apoptotic changes, including loss of membrane potential and the release of cytochrome c. [provided by RefSeq, Feb 2015],
<b>matters needing attention</b>	Avoid repeated freezing and thawing!
<b>Usage suggestions</b>	This product can be used in immunological reaction related experiments. For more information, please consult technical personnel.

## Products Images



Western Blot analysis of various cells using BNIP3L Monoclonal Antibody