



# N2DL2 Monoclonal Antibody

<b>Catalog No</b>	BYmab-06934
<b>Isotype</b>	IgG
<b>Reactivity</b>	Human;Rat;Mouse;
<b>Applications</b>	WB
<b>Gene Name</b>	ULBP2 N2DL2 RAET1H UNQ463/PRO791
<b>Protein Name</b>	NKG2D ligand 2 (N2DL-2) (NKG2DL2) (ALCAN-alpha) (Retinoic acid early transcript 1H) (UL16-binding protein 2)
<b>Immunogen</b>	Synthesized peptide derived from part region of human protein
<b>Specificity</b>	N2DL2 Monoclonal Antibody detects endogenous levels of protein.
<b>Formulation</b>	Liquid in PBS containing 50% glycerol, and 0.02% sodium azide.
<b>Source</b>	Monoclonal, Mouse,IgG
<b>Purification</b>	The antibody was affinity-purified from mouse antiserum by affinity-chromatography using epitope-specific immunogen.
<b>Dilution</b>	WB 1:500-2000
<b>Concentration</b>	1 mg/ml
<b>Purity</b>	≥90%
<b>Storage Stability</b>	-20°C/1 year
<b>Synonyms</b>	
<b>Observed Band</b>	27kD
<b>Cell Pathway</b>	Cell membrane ; Lipid-anchor, GPI-anchor . Endoplasmic reticulum . Secreted . In CMV-infected fibroblasts, detected in the endoplasmic reticulum/cis-Golgi. .
<b>Tissue Specificity</b>	Expressed in various types of cancer cell lines and in the fetus, but not in normal tissues.
<b>Function</b>	function:Ligand for the NKG2D receptor, together with at least ULBP1 and ULBP3. ULBPs activate multiple signaling pathways in primary NK cells, resulting in the production of cytokines and chemokines. Binding of ULBPs ligands to NKG2D induces calcium mobilization and activation of the JAK2, STAT5, ERK and PI3K kinase/Akt signal transduction pathway. In CMV infected cells, interacts with soluble CMV glycoprotein UL16. The interaction with UL16 blocked the interaction with the NKG2D receptor, providing a mechanism by which CMV infected cells might escape the immune system. UL16 also causes ULBP2 to be retained in the ER and cis-Golgi apparatus so that it does not reach the cell surface.,miscellaneous:The ULBPs are unusual members of the extended MHC class I superfamily, because they do not contain the alpha 3 domain and they lack

**Nanjing BYabs science technology Co.,Ltd**



a transmembrane domain. They are unlikely to present peptide

#### Background

This gene encodes a major histocompatibility complex (MHC) class I-related molecule that binds to the NKG2D receptor on natural killer (NK) cells to trigger release of multiple cytokines and chemokines that in turn contribute to the recruitment and activation of NK cells. The encoded protein undergoes further processing to generate the mature protein that is either anchored to membrane via a glycosylphosphatidylinositol moiety, or secreted. Many malignant cells secrete the encoded protein to evade immunosurveillance by NK cells. This gene is located in a cluster of multiple MHC class I-related genes on chromosome 6. [provided by RefSeq, Jul 2015],

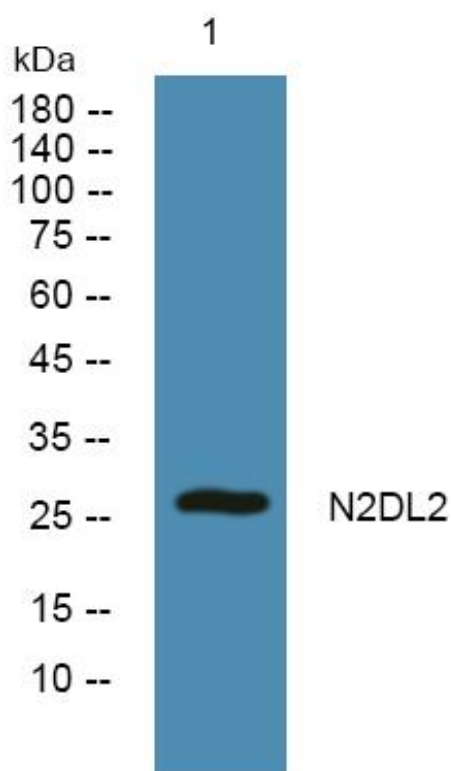
#### matters needing attention

Avoid repeated freezing and thawing!

#### Usage suggestions

This product can be used in immunological reaction related experiments. For more information, please consult technical personnel.

### Products Images



Western Blot analysis of various cells using N2DL2 Monoclonal Antibody