



MFGM Monoclonal Antibody

| | |
|--------------------|---|
| Catalog No | BYmab-06928 |
| Isotype | IgG |
| Reactivity | Human; Mouse;Rat |
| Applications | WB |
| Gene Name | MFGE8 |
| Protein Name | Lactadherin (Breast epithelial antigen BA46) (HMFG) (MFGM) (Milk fat globule-EGF factor 8) (MFG-E8) (SED1) [Cleaved into: Lactadherin short form; Medin] |
| Immunogen | Synthesized peptide derived from part region of human protein |
| Specificity | MFGM Monoclonal Antibody detects endogenous levels of protein. |
| Formulation | Liquid in PBS containing 50% glycerol, and 0.02% sodium azide. |
| Source | Monoclonal, Mouse,IgG |
| Purification | The antibody was affinity-purified from mouse antiserum by affinity-chromatography using epitope-specific immunogen. |
| Dilution | WB 1:500-2000 |
| Concentration | 1 mg/ml |
| Purity | ≥90% |
| Storage Stability | -20°C/1 year |
| Synonyms | |
| Observed Band | 42kD |
| Cell Pathway | Membrane ; Peripheral membrane protein . Secreted . Cytoplasmic vesicle, secretory vesicle, acrosome membrane ; Peripheral membrane protein . Located in the acrosomal region of zona-pellucida bound sperm. . |
| Tissue Specificity | Mammary epithelial cell surfaces and aortic media. Overexpressed in several carcinomas. |
| Function | function:Medin is the main constituent of aortic medial amyloid.,function:Specific ligand for the alpha-v/beta-3 and alpha-v/beta-5 receptors. Also binds to phosphatidylserine-enriched cell surfaces in a receptor-independent manner. Zona pellucida-binding protein which may play a role in gamete interaction. Binds specifically to rotavirus and inhibits its replication.,PTM:Medin has a ragged N-terminus with minor species starting at Pro-264 and Gly-273.,similarity:Contains 1 EGF-like domain.,similarity:Contains 1 F5/8 type C domain.,similarity:Contains 2 F5/8 type C domains.,similarity:Contains 3 F5/8 type C domains.,tissue specificity:Mammary epithelial cell surfaces and aortic media. |

Nanjing BYabscience technology Co.,Ltd



Overexpressed in several carcinomas.,

Background

This gene encodes a preproprotein that is proteolytically processed to form multiple protein products. The major encoded protein product, lactadherin, is a membrane glycoprotein that promotes phagocytosis of apoptotic cells. This protein has also been implicated in wound healing, autoimmune disease, and cancer. Lactadherin can be further processed to form a smaller cleavage product, medin, which comprises the major protein component of aortic medial amyloid (AMA). Alternative splicing results in multiple transcript variants. [provided by RefSeq, Jul 2015],

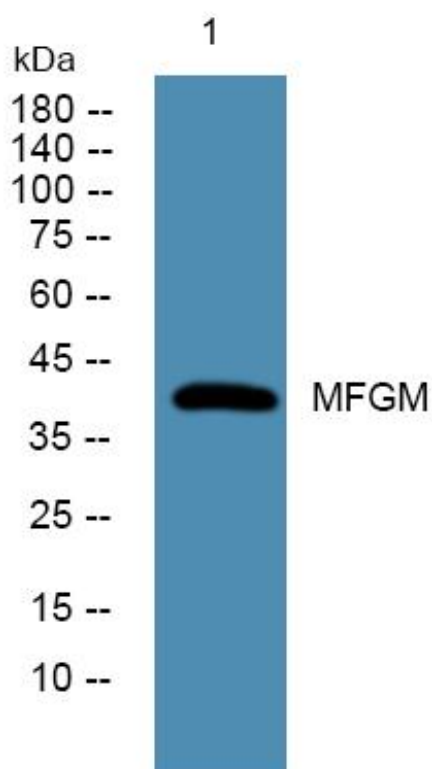
matters needing attention

Avoid repeated freezing and thawing!

Usage suggestions

This product can be used in immunological reaction related experiments. For more information, please consult technical personnel.

Products Images



Western Blot analysis of various cells using MFGM Monoclonal Antibody