



# FKB1B Monoclonal Antibody

<b>Catalog No</b>	BYmab-06927
<b>Isotype</b>	IgG
<b>Reactivity</b>	Human;Rat;Mouse
<b>Applications</b>	WB
<b>Gene Name</b>	FKBP1B FKBP12.6 FKBP1L FKBP9 OTK4
<b>Protein Name</b>	Peptidyl-prolyl cis-trans isomerase FKBP1B (PPIase FKBP1B) (EC 5.2.1.8) (12.6 kDa FK506-binding protein) (12.6 kDa FKBP) (FKBP-12.6) (FK506-binding protein 1B) (FKBP-1B) (Immunophilin FKBP12.6) (Rotam
<b>Immunogen</b>	Synthesized peptide derived from part region of human protein AA range: 1-50
<b>Specificity</b>	FKB1B Monoclonal Antibody detects endogenous levels of protein.
<b>Formulation</b>	Liquid in PBS containing 50% glycerol, and 0.02% sodium azide.
<b>Source</b>	Monoclonal, Mouse,IgG
<b>Purification</b>	The antibody was affinity-purified from mouse antiserum by affinity-chromatography using epitope-specific immunogen.
<b>Dilution</b>	WB 1:500-2000
<b>Concentration</b>	1 mg/ml
<b>Purity</b>	≥90%
<b>Storage Stability</b>	-20°C/1 year
<b>Synonyms</b>	
<b>Observed Band</b>	11kD
<b>Cell Pathway</b>	Cytoplasm . Sarcoplasmic reticulum .
<b>Tissue Specificity</b>	Detected in heart muscle (at protein level). Isoform 1 and isoform 2 are ubiquitous with highest levels in brain and thymus.
<b>Function</b>	catalytic activity:Peptidylproline (omega=180) = peptidylproline (omega=0).,enzyme regulation:Inhibited by both FK506 and rapamycin.,function:Associates with the ryanodine receptor (RYP-2) in cardiac muscle sarcoplasmic reticulum and may play a unique physiological role in excitation-contraction coupling in cardiac muscle. There are four molecules of FKBP12.6 per heart muscle RYP. Has the potential to contribute to the immunosuppressive and toxic effects of FK506 and rapamycin. PPIases accelerate the folding of proteins. It catalyzes the cis-trans isomerization of proline imidic peptide bonds in oligopeptides.,similarity:Belongs to the FKBP-type PPIase family. FKBP1 subfamily.,similarity:Contains 1 PPIase FKBP-type domain.,tissue

**Nanjing BYabscience technology Co.,Ltd**



specificity: Ubiquitous for both isoforms with highest levels in brain and thymus.,

## Background

The protein encoded by this gene is a member of the immunophilin protein family, which play a role in immunoregulation and basic cellular processes involving protein folding and trafficking. This encoded protein is a cis-trans prolyl isomerase that binds the immunosuppressants FK506 and rapamycin. It is highly similar to the FK506-binding protein 1A. Its physiological role is thought to be in excitation-contraction coupling in cardiac muscle. There are two alternatively spliced transcript variants of this gene encoding different isoforms. [provided by RefSeq, Jul 2008],

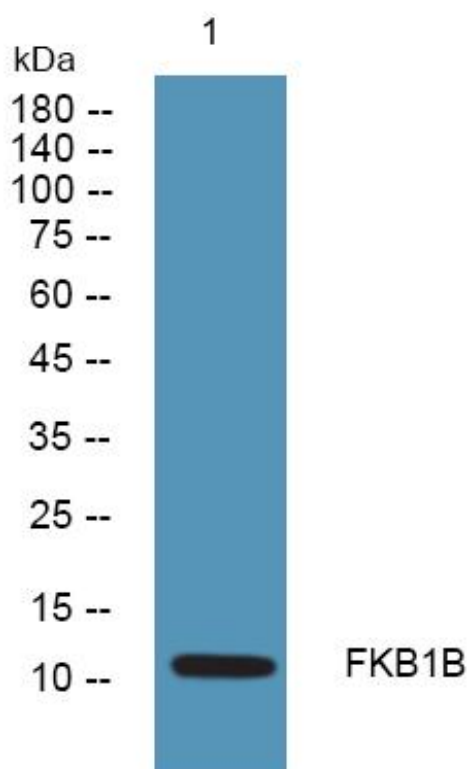
## matters needing attention

Avoid repeated freezing and thawing!

## Usage suggestions

This product can be used in immunological reaction related experiments. For more information, please consult technical personnel.

## Products Images



Western Blot analysis of various cells using FKB1B Monoclonal Antibody

Nanjing BYabs science technology Co.,Ltd

网址: [www.njbybio.com](http://www.njbybio.com)

官方热线: 025-5229-8998

监督电话: 15950492658