



CBPA2 Monoclonal Antibody

| | |
|---------------------------|--|
| Catalog No | BYmab-06920 |
| Isotype | IgG |
| Reactivity | Human;Rat;Mouse |
| Applications | WB |
| Gene Name | CPA2 |
| Protein Name | Carboxypeptidase A2 (EC 3.4.17.15) |
| Immunogen | Synthesized peptide derived from part region of human protein |
| Specificity | CBPA2 Monoclonal Antibody detects endogenous levels of protein. |
| Formulation | Liquid in PBS containing 50% glycerol, and 0.02% sodium azide. |
| Source | Monoclonal, Mouse,IgG |
| Purification | The antibody was affinity-purified from mouse antiserum by affinity-chromatography using epitope-specific immunogen. |
| Dilution | WB 1:500-2000 |
| Concentration | 1 mg/ml |
| Purity | ≥90% |
| Storage Stability | -20°C/1 year |
| Synonyms | |
| Observed Band | 46kD |
| Cell Pathway | Secreted. |
| Tissue Specificity | Brain,Pancreas, |
| Function | catalytic activity:Similar to that of carboxypeptidase A (EC 3.4.17.1), but with a preference for bulkier C-terminal residues.,cofactor:Binds 1 zinc ion per subunit.,similarity:Belongs to the peptidase M14 family., |
| Background | Three different forms of human pancreatic procarboxypeptidase A have been isolated. The encoded protein represents the A2 form, which is a monomeric protein with different biochemical properties from the A1 and A3 forms. The A2 form of pancreatic procarboxypeptidase acts on aromatic C-terminal residues and is a secreted protein. [provided by RefSeq, Dec 2008], |
| matters needing attention | Avoid repeated freezing and thawing! |

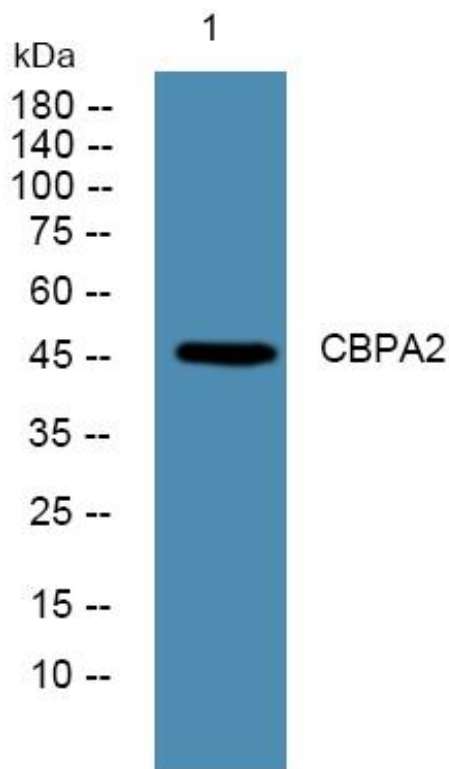
Nanjing BYabscience technology Co.,Ltd



Usage suggestions

This product can be used in immunological reaction related experiments. For more information, please consult technical personnel.

Products Images



Western Blot analysis of various cells using CBPA2 Monoclonal Antibody