



REL2 Monoclonal Antibody

Catalog No	BYmab-06918
Isotype	IgG
Reactivity	Human;Rat;Mouse;
Applications	WB
Gene Name	RLN2
Protein Name	Prorelaxin H2 [Cleaved into: Relaxin B chain; Relaxin A chain]
Immunogen	Synthesized peptide derived from part region of human protein
Specificity	REL2 Monoclonal Antibody detects endogenous levels of protein.
Formulation	Liquid in PBS containing 50% glycerol, and 0.02% sodium azide.
Source	Monoclonal, Mouse,IgG
Purification	The antibody was affinity-purified from mouse antiserum by affinity-chromatography using epitope-specific immunogen.
Dilution	WB 1:500-2000
Concentration	1 mg/ml
Purity	≥90%
Storage Stability	-20°C/1 year
Synonyms	
Observed Band	20kD
Cell Pathway	Secreted.
Tissue Specificity	Isoform 1 is expressed in the ovary during pregnancy. Also expressed in placenta, decidua and prostate. Isoform 2 is relatively abundant in placenta. It is in much lower abundance in the prostate gland. Not detected in the ovary.
Function	function:Relaxin is an ovarian hormone that acts with estrogen to produce dilatation of the birth canal in many mammals. May be involved in remodeling of connective tissues during pregnancy, promoting growth of pubic ligaments and ripening of the cervix.,similarity:Belongs to the insulin family.,subunit:Heterodimer of a B chain and an A chain linked by two disulfide bonds.,tissue specificity:Isoform 1 expressed in the ovary during pregnancy. Also expressed in placenta, decidua and prostate. Isoform 2 relatively abundant in placenta, much lower abundance in the prostate gland. Not detected in the ovary.,
Background	relaxin 2(RLN2) Homo sapiens This gene encodes a member of the relaxin subfamily and insulin superfamily of peptide hormones. In humans there are three

Nanjing BYabscience technology Co.,Ltd



non-allelic relaxin genes. This gene encodes multiple protein isoforms, at least one of which undergoes proteolytic processing. This processing generates relaxin A and B chains that are linked by disulfide bonds to form the mature peptide hormone. This hormone plays a role in the male and female reproductive systems and was initially noted for its role in pregnancy. This protein also plays broader roles in the cardiovascular system, including in the regulation of blood pressure and control of heart rate, and data from animal models shows that this protein may have anti-fibrotic and cardioprotective effects. [provided by RefSeq, Jul 2016],

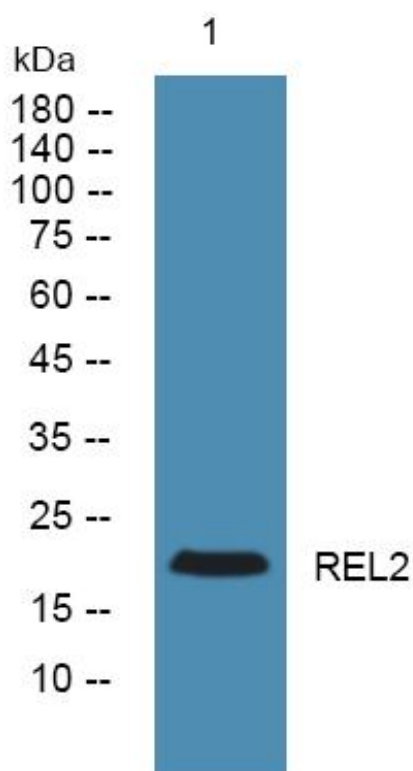
matters needing attention

Avoid repeated freezing and thawing!

Usage suggestions

This product can be used in immunological reaction related experiments. For more information, please consult technical personnel.

Products Images



Western Blot analysis of various cells using REL2 Monoclonal Antibody