



# TXND5 Monoclonal Antibody

<b>Catalog No</b>	BYmab-06882
<b>Isotype</b>	IgG
<b>Reactivity</b>	Human;Mouse
<b>Applications</b>	WB
<b>Gene Name</b>	TXNDC5 TLP46 UNQ364/PRO700
<b>Protein Name</b>	Thioredoxin domain-containing protein 5 (Endoplasmic reticulum resident protein 46) (ER protein 46) (ERp46) (Thioredoxin-like protein p46)
<b>Immunogen</b>	Synthesized peptide derived from part region of human protein
<b>Specificity</b>	TXND5 Monoclonal Antibody detects endogenous levels of protein.
<b>Formulation</b>	Liquid in PBS containing 50% glycerol, and 0.02% sodium azide.
<b>Source</b>	Monoclonal, Mouse,IgG
<b>Purification</b>	The antibody was affinity-purified from mouse antiserum by affinity-chromatography using epitope-specific immunogen.
<b>Dilution</b>	WB 1:500-2000
<b>Concentration</b>	1 mg/ml
<b>Purity</b>	≥90%
<b>Storage Stability</b>	-20°C/1 year
<b>Synonyms</b>	
<b>Observed Band</b>	47kD
<b>Cell Pathway</b>	Endoplasmic reticulum lumen .
<b>Tissue Specificity</b>	Eye,Liver,Lymph,Lymph node,Ovary,PCR rescued clones,Retina,Spleen,Stomach,
<b>Function</b>	function:Involved in the development of lysosome-related organelles, such as melanosomes and platelet-dense granules.,function:Possesses thioredoxin activity. Has been shown to reduce insulin disulfide bonds. Also complements protein disulfide-isomerase deficiency in yeast.,similarity:Belongs to the Muted family.,similarity:Belongs to the protein disulfide isomerase family.,similarity:Contains 2 thioredoxin domains.,similarity:Contains 3 thioredoxin domains.,subunit:Interacts with pallidin. Interacts with dystrobrevin binding protein 1 and CNO/cappuccino (By similarity). Part of the biogenesis of lysosome-related organelles complex 1 (BLOC-1).,
<b>Background</b>	thioredoxin domain containing 5(TXNDC5) Homo sapiens This gene encodes a protein-disulfide isomerase. Its expression is induced by hypoxia and its role

**Nanjing BYabscience technology Co.,Ltd**



may be to protect hypoxic cells from apoptosis. Alternative splicing results in multiple transcript variants. Read-through transcription also exists between this gene and the neighboring upstream MUTED (muted homolog) gene. [provided by RefSeq, Dec 2010],

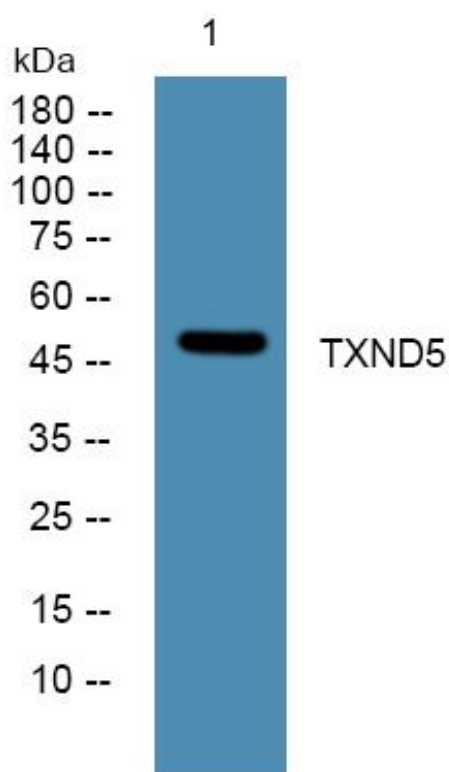
**matters needing attention**

Avoid repeated freezing and thawing!

**Usage suggestions**

This product can be used in immunological reaction related experiments. For more information, please consult technical personnel.

## Products Images



Western Blot analysis of various cells using TXND5 Monoclonal Antibody