



# SKAP1 Monoclonal Antibody

<b>Catalog No</b>	BYmab-06866
<b>Isotype</b>	IgG
<b>Reactivity</b>	Human;Rat;Mouse
<b>Applications</b>	WB
<b>Gene Name</b>	SKAP1 SCAP1 SKAP55
<b>Protein Name</b>	Src kinase-associated phosphoprotein 1 (Src family-associated phosphoprotein 1) (Src kinase-associated phosphoprotein of 55 kDa) (SKAP-55) (pp55)
<b>Immunogen</b>	Synthesized peptide derived from part region of human protein
<b>Specificity</b>	SKAP1 Monoclonal Antibody detects endogenous levels of protein.
<b>Formulation</b>	Liquid in PBS containing 50% glycerol, and 0.02% sodium azide.
<b>Source</b>	Monoclonal, Mouse,IgG
<b>Purification</b>	The antibody was affinity-purified from mouse antiserum by affinity-chromatography using epitope-specific immunogen.
<b>Dilution</b>	WB 1:500-2000
<b>Concentration</b>	1 mg/ml
<b>Purity</b>	≥90%
<b>Storage Stability</b>	-20°C/1 year
<b>Synonyms</b>	
<b>Observed Band</b>	39kD
<b>Cell Pathway</b>	Cytoplasm . Nucleus . Cell membrane . Upon T-cell stimulation, translocates to lipid rafts at the cell membrane. .
<b>Tissue Specificity</b>	Highly expressed in thymocytes and peripheral blood lymphocytes. Also expressed in spleen cells and testis. Present in T-cells (at protein level).
<b>Function</b>	domain:The SH3 domain interacts with FYB.,function:Positively regulates T-cell receptor signaling by enhancing the MAP kinase pathway. Required for optimal conjugation between T-cells and antigen-presenting cells by promoting the clustering of integrin ITGAL on the surface of T-cells. May be involved in high affinity immunoglobulin epsilon receptor signaling in mast cells.,PTM:Phosphorylated on tyrosines. Phosphorylation by FYN on Tyr-271 is required for GRB2 interaction. Phosphorylation by FYN on Tyr-295 abolishes interaction with FYB. Tyr-232 is dephosphorylated by PTPRC.,similarity:Belongs to the SKAP family.,similarity:Contains 1 PH domain.,similarity:Contains 1 SH3 domain.,subcellular location:Upon T-cell stimulation, translocates to lipid rafts at the cell membrane.,subunit:Homodimer. Interacts with FYN and PTPRC. Interacts

**Nanjing BYabscience technology Co.,Ltd**



with GRB2 when phosphorylated on Tyr-271. Interacts with F

### Background

This gene encodes a T cell adaptor protein, a class of intracellular molecules with modular domains caMABLE of recruiting additional proteins but that exhibit no intrinsic enzymatic activity. The encoded protein contains a unique N-terminal region followed by a PH domain and C-terminal SH3 domain. Along with the adhesion and degranulation-promoting adaptor protein, the encoded protein plays a critical role in inside-out signaling by coupling T-cell antigen receptor stimulation to the activation of integrins. [provided by RefSeq, Jul 2008],

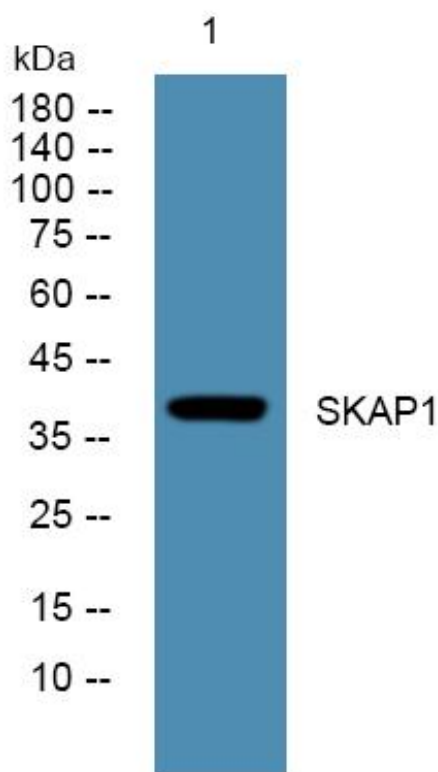
### matters needing attention

Avoid repeated freezing and thawing!

### Usage suggestions

This product can be used in immunological reaction related experiments. For more information, please consult technical personnel.

## Products Images



Western Blot analysis of various cells using SKAP1 Monoclonal Antibody

Nanjing BYabscience technology Co.,Ltd

网址: [www.njbybio.com](http://www.njbybio.com)

官方热线: 025-5229-8998

监督电话: 15950492658