



F19A1 Monoclonal Antibody

Catalog No	BYmab-06810
Isotype	IgG
Reactivity	Human;Mouse
Applications	WB
Gene Name	FAM19A1 TAFA1
Protein Name	Protein FAM19A1 (Chemokine-like protein TAFA-1)
Immunogen	Synthesized peptide derived from part region of human protein
Specificity	F19A1 Monoclonal Antibody detects endogenous levels of protein.
Formulation	Liquid in PBS containing 50% glycerol, and 0.02% sodium azide.
Source	Monoclonal, Mouse,IgG
Purification	The antibody was affinity-purified from mouse antiserum by affinity-chromatography using epitope-specific immunogen.
Dilution	WB 1:500-2000
Concentration	1 mg/ml
Purity	≥90%
Storage Stability	-20°C/1 year
Synonyms	
Observed Band	14kD
Cell Pathway	Secreted .
Tissue Specificity	Brain-specific.
Function	similarity:Belongs to the FAM19/TAFA family.,tissue specificity:Brain-specific.,
Background	family with sequence similarity 19 member A1, C-C motif chemokine like(FAM19A1) Homo sapiens This gene is a member of the TAFA family which is composed of five highly homologous genes that encode small secreted proteins. These proteins contain conserved cysteine residues at fixed positions, and are distantly related to MIP-1alpha, a member of the CC-chemokine family. The TAFA proteins are predominantly expressed in specific regions of the brain, and are postulated to function as brain-specific chemokines or neurokinins that act as regulators of immune and nervous cells. [provided by RefSeq, Jul 2008],

Nanjing BYabscience technology Co.,Ltd

网址: www.njbybio.com

官方热线: 025-5229-8998

监督电话: 15950492658



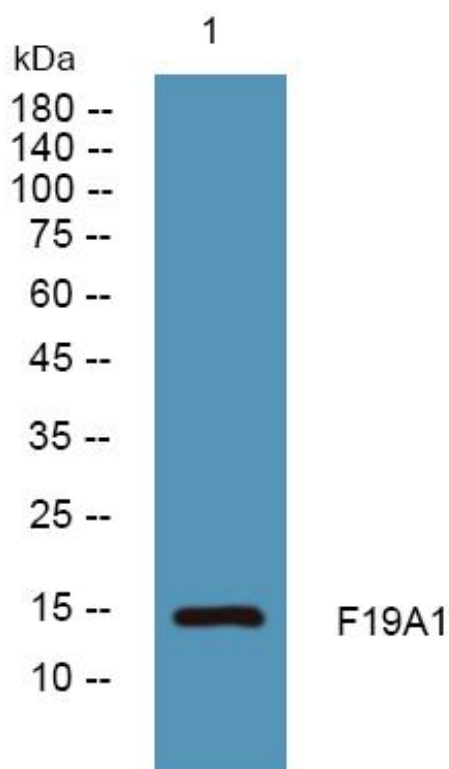
matters needing attention

Avoid repeated freezing and thawing!

Usage suggestions

This product can be used in immunological reaction related experiments. For more information, please consult technical personnel.

Products Images



Western Blot analysis of various cells using F19A1 Monoclonal Antibody