



# N2DL3 Monoclonal Antibody

Catalog No	BYmab-06808
Isotype	IgG
Reactivity	Human;Rat;Mouse;
Applications	WB
Gene Name	ULBP3 N2DL3 RAET1N
Protein Name	NKG2D ligand 3 (N2DL-3) (NKG2DL3) (ALCAN-gamma) (Retinoic acid early transcript 1N)
Immunogen	Synthesized peptide derived from part region of human protein
Specificity	N2DL3 Monoclonal Antibody detects endogenous levels of protein.
Formulation	Liquid in PBS containing 50% glycerol, and 0.02% sodium azide.
Source	Monoclonal, Mouse,IgG
Purification	The antibody was affinity-purified from mouse antiserum by affinity-chromatography using epitope-specific immunogen.
Dilution	WB 1:500-2000
Concentration	1 mg/ml
Purity	≥90%
Storage Stability	-20°C/1 year
Synonyms	
Observed Band	26kD
Cell Pathway	Cell membrane ; Lipid-anchor, GPI-anchor .
Tissue Specificity	PCR rescued clones,Testis,
Function	function:Ligand for the NKG2D receptor, together with at least ULBP1 and ULBP2. ULBPs activate multiple signaling pathways in primary NK cells, resulting in the production of cytokines and chemokines. Binding of ULBPs ligands to NKG2D induces calcium mobilization and activation of the JAK2, STAT5, ERK and PI3K kinase/Akt signal transduction pathway. Has lower affinity for NKG2D compared to ULBP1 and ULBP2 and induces weaker signaling responses than does ULBP2 or ULBP1.,miscellaneous:The region from chromosome 6q24.1-6q25.3 contains as many as 10 ULBP-related sequences, many of which are pseudogenes.,miscellaneous:The ULBPs are unusual members of the extended MHC class I superfamily, because they do not contain the alpha 3 domain and they lack a transmembrane domain. They are unlikely to present peptides.,similarity:Belongs to the MHC class I family.,subunit:Does not interact

Nanjing BYabscience technology Co.,Ltd



with the CMV

#### Background

The protein encoded by this gene is one of several related ligands of the KLRK1/NKG2D receptor, which is found in primary NK cells. Binding of these ligands to the receptor activates several signal transduction pathways, including the JAK2, STAT5, and ERK pathways. The encoded protein is expressed solubly and on the surface of many tumor cells, making it potentially an important target for therapeutics. [provided by RefSeq, Nov 2015],

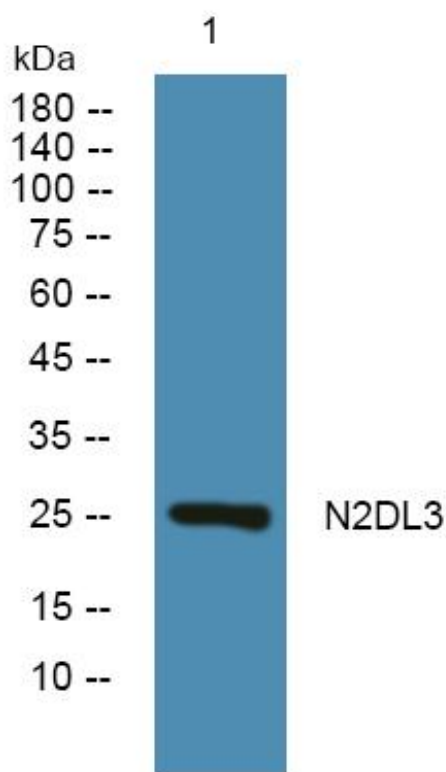
#### matters needing attention

Avoid repeated freezing and thawing!

#### Usage suggestions

This product can be used in immunological reaction related experiments. For more information, please consult technical personnel.

### Products Images



Western Blot analysis of various cells using N2DL3 Monoclonal Antibody

Nanjing BYabs science technology Co.,Ltd

网址: [www.njbybio.com](http://www.njbybio.com)

官方热线: 025-5229-8998

监督电话: 15950492658