



# FOXF1 Monoclonal Antibody

Catalog No	BYmab-06802
Isotype	IgG
Reactivity	Human;Mouse
Applications	WB
Gene Name	FOXF1 FKHL5 FREAC1
Protein Name	Forkhead box protein F1 (Forkhead-related activator 1) (FREAC-1) (Forkhead-related protein FKHL5) (Forkhead-related transcription factor 1)
Immunogen	Synthesized peptide derived from part region of human protein
Specificity	FOXF1 Monoclonal Antibody detects endogenous levels of protein.
Formulation	Liquid in PBS containing 50% glycerol, and 0.02% sodium azide.
Source	Monoclonal, Mouse,IgG
Purification	The antibody was affinity-purified from mouse antiserum by affinity-chromatography using epitope-specific immunogen.
Dilution	WB 1:500-2000
Concentration	1 mg/ml
Purity	≥90%
Storage Stability	-20°C/1 year
Synonyms	
Observed Band	41kD
Cell Pathway	Nucleus .
Tissue Specificity	Expressed in lung and placenta.
Function	caution:It is uncertain whether Met-1 or Met-26 is the initiator.,domain:Activation domains C-terminal of (and distinct from) the forkhead domains are necessary for transcriptional activation.,function:Probable transcription activator for a number of lung-specific genes.,similarity:Contains 1 fork-head DNA-binding domain.,tissue specificity:Lung and placenta.,
Background	This gene belongs to the forkhead family of transcription factors which is characterized by a distinct forkhead domain. The specific function of this gene has not yet been determined; however, it may play a role in the regulation of pulmonary genes as well as embryonic development. [provided by RefSeq, Jul 2008],

Nanjing BYabscience technology Co.,Ltd



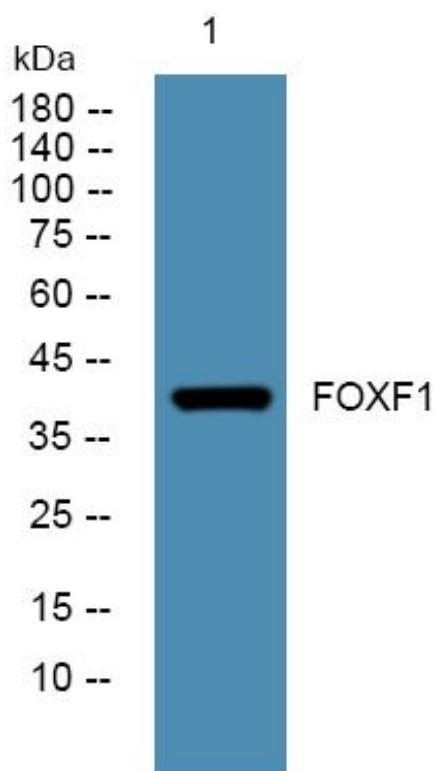
**matters needing attention**

Avoid repeated freezing and thawing!

**Usage suggestions**

This product can be used in immunological reaction related experiments. For more information, please consult technical personnel.

## Products Images



Western Blot analysis of various cells using FOXF1 Monoclonal Antibody