



CLC10 Monoclonal Antibody

| | |
|---------------------------|---|
| Catalog No | BYmab-06785 |
| Isotype | IgG |
| Reactivity | Human;Rat;Mouse |
| Applications | WB |
| Gene Name | CLEC10A CLECSF13 CLECSF14 HML |
| Protein Name | C-type lectin domain family 10 member A (C-type lectin superfamily member 14) (Macrophage lectin 2) (CD antigen CD301) |
| Immunogen | Synthesized peptide derived from part region of human protein AA range: 191-240 |
| Specificity | CLC10 Monoclonal Antibody detects endogenous levels of protein. |
| Formulation | Liquid in PBS containing 50% glycerol, and 0.02% sodium azide. |
| Source | Monoclonal, Mouse,IgG |
| Purification | The antibody was affinity-purified from mouse antiserum by affinity-chromatography using epitope-specific immunogen. |
| Dilution | WB 1:500-2000 |
| Concentration | 1 mg/ml |
| Purity | ≥90% |
| Storage Stability | -20°C/1 year |
| Synonyms | |
| Observed Band | 34kD |
| Cell Pathway | Membrane ; Single-pass type II membrane protein . |
| Tissue Specificity | Brain,Peripheral blood monocyte,Testis, |
| Function | function:Probable role in regulating adaptive and innate immune responses. Binds in a calcium-dependent manner to terminal galactose and N-acetylgalactosamine units, linked to serine or threonine. These sugar moieties are known as Tn-Ag and are expressed in a variety of carcinoma cells.,online information:MGL,similarity:Contains 1 C-type lectin domain., |
| Background | This gene encodes a member of the C-type lectin/C-type lectin-like domain (CTL/CTLD) superfamily. Members of this family share a common protein fold and have diverse functions, such as cell adhesion, cell-cell signalling, glycoprotein turnover, and roles in inflammation and immune response. The encoded type 2 transmembrane protein may function as a cell surface antigen. Two transcript |

Nanjing BYabscience technology Co.,Ltd



variants encoding distinct isoforms have been identified for this gene. [provided by RefSeq, Jul 2008],

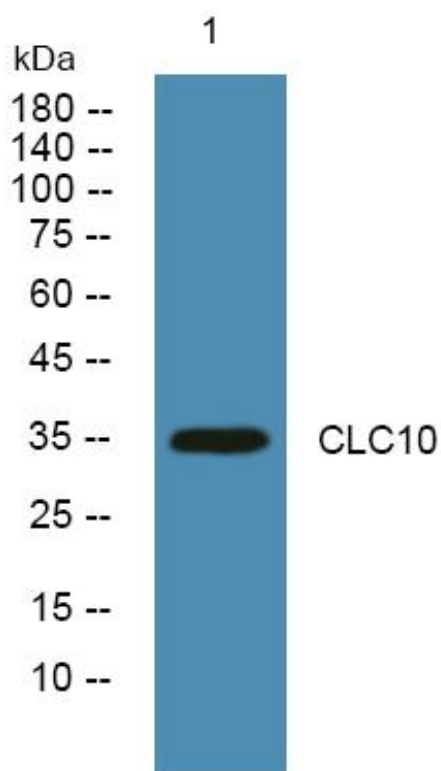
matters needing attention

Avoid repeated freezing and thawing!

Usage suggestions

This product can be used in immunological reaction related experiments. For more information, please consult technical personnel.

Products Images



Western Blot analysis of various cells using CLC10 Monoclonal Antibody