



NKG2C Monoclonal Antibody

Catalog No	BYmab-06782
Isotype	IgG
Reactivity	Human;Rat;Mouse;
Applications	WB
Gene Name	KLRC2 NKG2C
Protein Name	NKG2-C type II integral membrane protein (CD159 antigen-like family member C) (NK cell receptor C) (NKG2-C-activating NK receptor) (CD antigen CD159c)
Immunogen	Synthesized peptide derived from part region of human protein AA range: 121-170
Specificity	NKG2C Monoclonal Antibody detects endogenous levels of protein.
Formulation	Liquid in PBS containing 50% glycerol, and 0.02% sodium azide.
Source	Monoclonal, Mouse,IgG
Purification	The antibody was affinity-purified from mouse antiserum by affinity-chromatography using epitope-specific immunogen.
Dilution	WB 1:500-2000
Concentration	1 mg/ml
Purity	≥90%
Storage Stability	-20°C/1 year
Synonyms	
Observed Band	25kD
Cell Pathway	Cell membrane ; Single-pass type II membrane protein .
Tissue Specificity	Expressed in NK cell subsets, in particular in adaptive CD57-positive NK cells (at protein level) (PubMed:20952657, PubMed:21825173). Expressed in terminally differentiated cytotoxic gamma-delta T cells (at protein level) (PubMed:20952657). Expressed in alpha-beta T cells subsets (at protein level) (PubMed:20952657). KLRD1-KLRC1 and KLRD1-KLRC2 are differentially expressed within NK and T cell populations, with only minor subsets expressing both receptor complexes (at protein level) (PubMed:20952657).
Function	function:Plays a role as a receptor for the recognition of MHC class I HLA-E molecules by NK cells and some cytotoxic T-cells.,polymorphism:Two alleles are known. The sequence shown is that of allele NKG2-C*02.,similarity:Contains 1 C-type lectin domain.,subunit:Can form disulfide-bonded heterodimer with CD94.,tissue specificity:Natural killer cells.,

Nanjing BYabscience technology Co.,Ltd



Background

Natural killer (NK) cells are lymphocytes that can mediate lysis of certain tumor cells and virus-infected cells without previous activation. They can also regulate specific humoral and cell-mediated immunity. NK cells preferentially express several calcium-dependent (C-type) lectins, which have been implicated in the regulation of NK cell function. The group, designated KLRC (NKG2) are expressed primarily in natural killer (NK) cells and encodes a family of transmembrane proteins characterized by a type II membrane orientation (extracellular C terminus) and the presence of a C-type lectin domain. The KLRC (NKG2) gene family is located within the NK complex, a region that contains several C-type lectin genes preferentially expressed on NK cells. KLRC2 alternative splice variants have been described but their full-length nature has not been determined. [provided by RefSeq, Jul 2008],

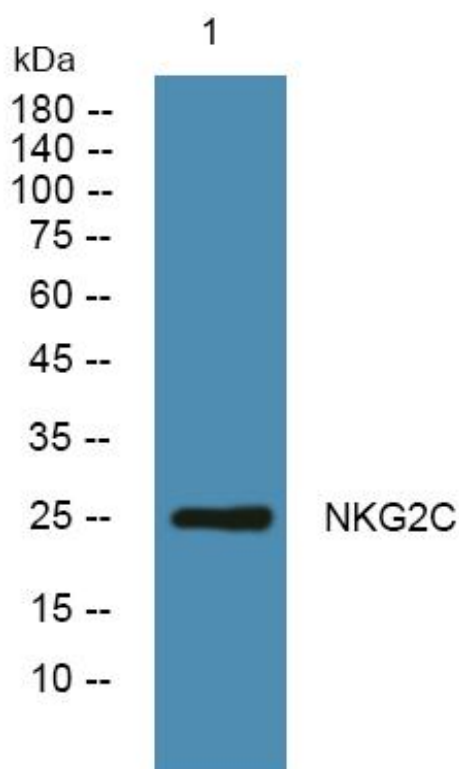
matters needing attention

Avoid repeated freezing and thawing!

Usage suggestions

This product can be used in immunological reaction related experiments. For more information, please consult technical personnel.

Products Images



Western Blot analysis of various cells using NKG2C Monoclonal Antibody