



# CEAM3 Monoclonal Antibody

Catalog No	BYmab-06779
Isotype	IgG
Reactivity	Human;Rat;Mouse;
Applications	WB
Gene Name	CEACAM3 CD66D CGM1
Protein Name	Carcinoembryonic antigen-related cell adhesion molecule 3 (Carcinoembryonic antigen CGM1) (CD antigen CD66d)
Immunogen	Synthesized peptide derived from part region of human protein
Specificity	CEAM3 Monoclonal Antibody detects endogenous levels of protein.
Formulation	Liquid in PBS containing 50% glycerol, and 0.02% sodium azide.
Source	Monoclonal, Mouse,IgG
Purification	The antibody was affinity-purified from mouse antiserum by affinity-chromatography using epitope-specific immunogen.
Dilution	WB 1:500-2000
Concentration	1 mg/ml
Purity	≥90%
Storage Stability	-20°C/1 year
Synonyms	
Observed Band	27kD
Cell Pathway	Membrane; Single-pass type I membrane protein.
Tissue Specificity	CGM1a, the predominant CGM1 transcript, is granulocyte-specific. Not detected out of the granulocytic lineage, such as monocytes, lymphocytes, spleen, testis, colon, brain, liver, pancreas, thymus, ovary, placenta, skeletal muscle, prostate, small intestine, heart, lung and kidney.
Function	caution:This is not the ortholog of rat CEACAM3.,domain:The cytosolic domain is involved in S100A9 interaction.,function:Major granulocyte receptor mediating recognition and efficient opsonin-independent phagocytosis of CEACAM-binding microorganisms, including Neissiria, Moxarella and Haemophilus species, thus playing an important role in the clearance of pathogens by the innate immune system. Responsible for RAC1 stimulation in the course of pathogen phagocytosis.,PTM:Tyrosine-phosphorylated in response to microbial binding. Tyr-230 and Tyr-241 are both required for phosphorylation to be detected.,similarity:Belongs to the immunoglobulin superfamily. CEA

Nanjing BYabscience technology Co.,Ltd



family.,similarity:Contains 1 Ig-like V-type (immunoglobulin-like)  
domain.,subunit:Interacts with S100A9/calprotectin. This interaction is  
calcium-dependent, but independent of CEACAM3 phosphorylation.,tissue  
specificity:CGM1a, the pred

## Background

This gene encodes a member of the family of carcinoembryonic antigen-related cell adhesion molecules (CEACAMs), which are used by several bacterial pathogens to bind and invade host cells. The encoded transmembrane protein directs phagocytosis of several bacterial species that is dependent on the small GTPase Rac. It is thought to serve an important role in controlling human-specific pathogens by the innate immune system. Alternatively spliced transcript variants have been described. [provided by RefSeq, Mar 2013],

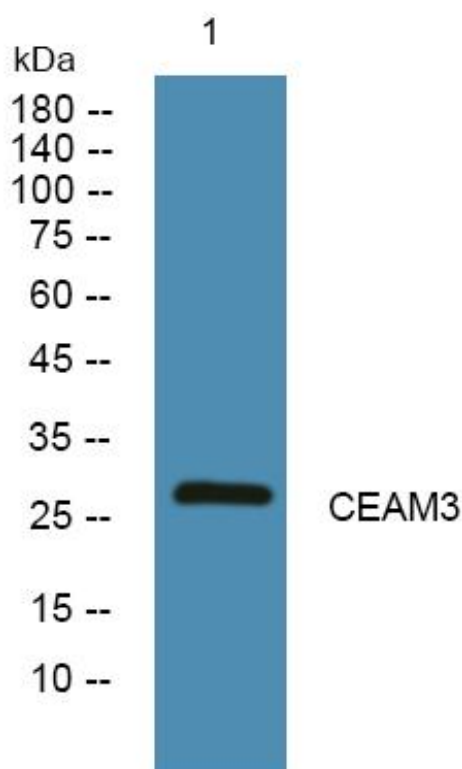
## matters needing attention

Avoid repeated freezing and thawing!

## Usage suggestions

This product can be used in immunological reaction related experiments. For more information, please consult technical personnel.

## Products Images



Nanjing BYabscience technology Co.,Ltd

网址: [www.njbybio.com](http://www.njbybio.com)

官方热线: 025-5229-8998

监督电话: 15950492658