



TRIB2 Monoclonal Antibody

Catalog No	BYmab-06759
Isotype	IgG
Reactivity	Human;Mouse
Applications	WB
Gene Name	TRIB2 TRB2
Protein Name	Tribbles homolog 2 (TRB-2)
Immunogen	Synthesized peptide derived from part region of human protein
Specificity	TRIB2 Monoclonal Antibody detects endogenous levels of protein.
Formulation	Liquid in PBS containing 50% glycerol, and 0.02% sodium azide.
Source	Monoclonal, Mouse,IgG
Purification	The antibody was affinity-purified from mouse antiserum by affinity-chromatography using epitope-specific immunogen.
Dilution	WB 1:500-2000
Concentration	1 mg/ml
Purity	≥90%
Storage Stability	-20°C/1 year
Synonyms	
Observed Band	37kD
Cell Pathway	Cytoplasm . Cytoplasm, cytoskeleton . May associate with the cytoskeleton. .
Tissue Specificity	Highly expressed in peripheral blood leukocytes.
Function	function:Interacts with MAPK kinases and regulates activation of MAP kinases. Does not display kinase activity.,miscellaneous:Antibodies against TRIB2 are present in sera from patients with autoimmune uveitis.,similarity:Belongs to the protein kinase superfamily. CAMK Ser/Thr protein kinase family. Tribbles subfamily.,similarity:Contains 1 protein kinase domain.,subcellular location:May associate with the cytoskeleton.,tissue specificity:Highly expressed in peripheral blood leukocytes.,
Background	This gene encodes one of three members of the Tribbles family. The Tribbles members share a Trb domain, which is homologous to protein serine-threonine kinases, but lacks the active site lysine and probably lacks a catalytic function. The Tribbles proteins interact and modulate the activity of signal transduction

Nanjing BYabscience technology Co.,Ltd



pathways in a number of physiological and pathological processes. This Tribbles member induces apoptosis of cells mainly of the hematopoietic origin. It has been identified as a protein up-regulated by inflammatory stimuli in myeloid (THP-1) cells, and also as an oncogene that inactivates the transcription factor C/EBPalpha (CCAAT/enhancer-binding protein alpha) and causes acute myelogenous leukemia. Alternatively spliced transcript variants have been found for this gene. [provided by RefSeq, Mar 2009],

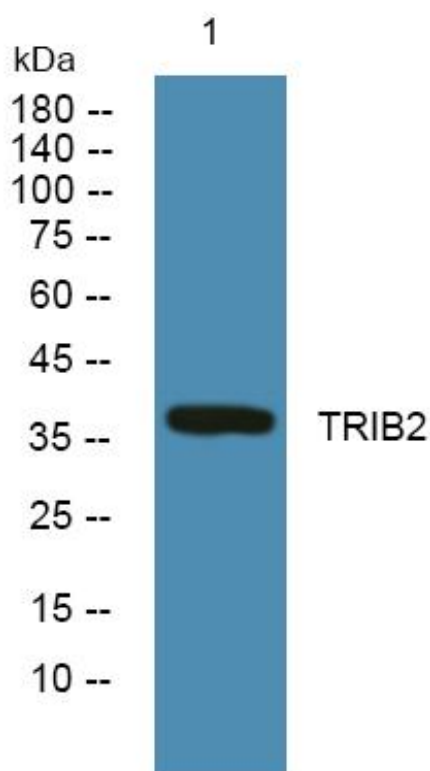
matters needing attention

Avoid repeated freezing and thawing!

Usage suggestions

This product can be used in immunological reaction related experiments. For more information, please consult technical personnel.

Products Images



Western Blot analysis of various cells using TRIB2 Monoclonal Antibody