



# TSSK1 Monoclonal Antibody

<b>Catalog No</b>	BYmab-06755
<b>Isotype</b>	IgG
<b>Reactivity</b>	Human;Mouse
<b>Applications</b>	WB
<b>Gene Name</b>	TSSK1B SPOGA1 SPOGA4 STK22A STK22D TSSK1 FKSG81
<b>Protein Name</b>	Testis-specific serine/threonine-protein kinase 1 (TSK-1) (TSK1) (TSSK-1) (Testis-specific kinase 1) (EC 2.7.11.1) (Serine/threonine-protein kinase 22A)
<b>Immunogen</b>	Synthesized peptide derived from part region of human protein
<b>Specificity</b>	TSSK1 Monoclonal Antibody detects endogenous levels of protein.
<b>Formulation</b>	Liquid in PBS containing 50% glycerol, and 0.02% sodium azide.
<b>Source</b>	Monoclonal, Mouse,IgG
<b>Purification</b>	The antibody was affinity-purified from mouse antiserum by affinity-chromatography using epitope-specific immunogen.
<b>Dilution</b>	WB 1:500-2000
<b>Concentration</b>	1 mg/ml
<b>Purity</b>	≥90%
<b>Storage Stability</b>	-20°C/1 year
<b>Synonyms</b>	
<b>Observed Band</b>	40kD
<b>Cell Pathway</b>	Cytoplasm . Cytoplasmic vesicle, secretory vesicle, acrosome . Cell projection, cilium, flagellum . In spermatozoa, present in the sperm head and in the flagellum. .
<b>Tissue Specificity</b>	Testis-specific. Present in sperm (at protein level).
<b>Function</b>	catalytic activity:ATP + a protein = ADP + a phosphoprotein.,cofactor:Magnesium.,enzyme regulation:Activated by phosphorylation on Thr-174, potentially by autophosphorylation.,function:May be involved in a signaling pathway during male germ cell development or mature sperm function.,PTM:Autophosphorylated.,similarity:Belongs to the protein kinase superfamily.,similarity:Belongs to the protein kinase superfamily. CAMK Ser/Thr protein kinase family.,similarity:Contains 1 protein kinase domain.,
<b>Background</b>	TSSK1 belongs to a family of serine/threonine kinases highly expressed in testis (Hao et al., 2004 [PubMed 15044604]).[supplied by OMIM, Mar 2008],

**Nanjing BYabscience technology Co.,Ltd**



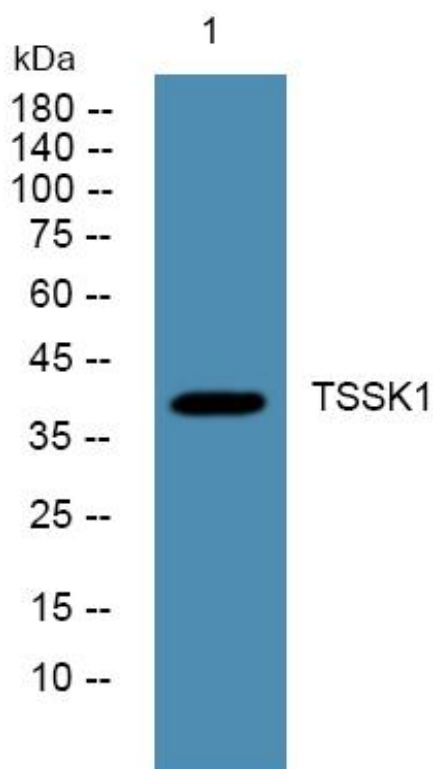
**matters needing attention**

Avoid repeated freezing and thawing!

**Usage suggestions**

This product can be used in immunological reaction related experiments. For more information, please consult technical personnel.

## Products Images



Western Blot analysis of various cells using TSSK1 Monoclonal Antibody