



# TAOK2 Monoclonal Antibody

<b>Catalog No</b>	BYmab-06752
<b>Isotype</b>	IgG
<b>Reactivity</b>	Human;Mouse;Rat
<b>Applications</b>	WB
<b>Gene Name</b>	TAOK2 KIAA0881 MAP3K17 PSK PSK1 UNQ2971/PRO7431
<b>Protein Name</b>	Serine/threonine-protein kinase TAO2 (EC 2.7.11.1) (Kinase from chicken homolog C) (hKFC-C) (Prostate-derived sterile 20-like kinase 1) (PSK-1) (PSK1) (Prostate-derived STE20-like kinase 1) (Thousand
<b>Immunogen</b>	Synthesized peptide derived from part region of human protein
<b>Specificity</b>	TAOK2 Monoclonal Antibody detects endogenous levels of protein.
<b>Formulation</b>	Liquid in PBS containing 50% glycerol, and 0.02% sodium azide.
<b>Source</b>	Monoclonal, Mouse,IgG
<b>Purification</b>	The antibody was affinity-purified from mouse antiserum by affinity-chromatography using epitope-specific immunogen.
<b>Dilution</b>	WB 1:500-2000
<b>Concentration</b>	1 mg/ml
<b>Purity</b>	≥90%
<b>Storage Stability</b>	-20°C/1 year
<b>Synonyms</b>	
<b>Observed Band</b>	135kD
<b>Cell Pathway</b>	Cytoplasmic vesicle membrane ; Multi-pass membrane protein . Cytoplasm, cytoskeleton. Nucleus. Catalytically active full-length phosphorylated isoform 1 localizes to microtubules in the cytoplasm predominantly on microtubule cables positioned around the nucleus. A C-terminally truncated form of isoform 1 is present in the nucleus; isoform 2 and kinase-defective, as well as full-length isoform 1 are excluded from the nucleus.; [Isoform 2]: Cell projection, dendrite. In dendrites, colocalizes with PCDH8. .
<b>Tissue Specificity</b>	Ubiquitously expressed, with a higher level of expression in testis and brain.
<b>Function</b>	catalytic activity:ATP + a protein = ADP + a phosphoprotein.,cofactor:Magnesium.,function:Activates the JNK MAP kinase pathway through the specific activation of the upstream MKK3 and MKK6 kinases.,similarity:Belongs to the protein kinase superfamily.,similarity:Belongs to the protein kinase superfamily. STE Ser/Thr protein kinase family. STE20

**Nanjing BYabscience technology Co.,Ltd**



subfamily.,similarity:Contains 1 protein kinase domain.,subcellular location:Found to be perinuclear and localized to vesicular compartment.,subunit:Interacts with MKK3 and MKK6 (By similarity). Self-associates.,tissue specificity:Ubiquitously expressed, with a higher level of expression in testis and brain.,

#### Background

This gene encodes a serine/threonine protein kinase that is involved in many different processes, including, cell signaling, microtubule organization and stability, and apoptosis. Alternatively spliced transcript variants encoding different isoforms have been described for this gene. [provided by RefSeq, Oct 2011],

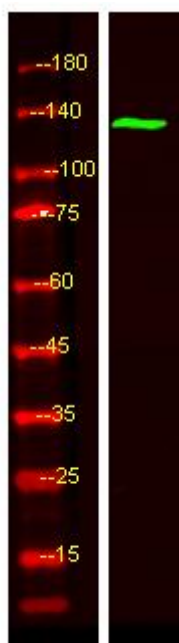
#### matters needing attention

Avoid repeated freezing and thawing!

#### Usage suggestions

This product can be used in immunological reaction related experiments. For more information, please consult technical personnel.

## Products Images



Western Blot analysis of various cells using TAOK2 Monoclonal Antibody