



# NRK Monoclonal Antibody

Catalog No	BYmab-06738
Isotype	IgG
Reactivity	Human;Mouse
Applications	WB
Gene Name	NRK
Protein Name	Nik-related protein kinase (EC 2.7.11.1)
Immunogen	Synthesized peptide derived from part region of human protein
Specificity	NRK Monoclonal Antibody detects endogenous levels of protein.
Formulation	Liquid in PBS containing 50% glycerol, and 0.02% sodium azide.
Source	Monoclonal, Mouse,IgG
Purification	The antibody was affinity-purified from mouse antiserum by affinity-chromatography using epitope-specific immunogen.
Dilution	WB 1:500-2000
Concentration	1 mg/ml
Purity	≥90%
Storage Stability	-20°C/1 year
Synonyms	
Observed Band	174kD
Cell Pathway	cytoplasm,integral component of membrane,
Tissue Specificity	Fetal kidney,Ovary,Placenta,
Function	catalytic activity:ATP + a protein = ADP + a phosphoprotein.,function:May phosphorylate cofilin-1 and induce actin polymerization through this process, during the late stages of embryogenesis. Involved in the TNF-alpha-induced signaling pathway.,similarity:Belongs to the protein kinase superfamily. STE Ser/Thr protein kinase family. STE20 subfamily.,similarity:Contains 1 CNH domain.,similarity:Contains 1 protein kinase domain.,
Background	Nik related kinase(NRK) Homo sapiens The mouse ortholog of this gene encodes a protein kinase required for JNK activation. The encoded protein may be involved in the induction of actin polymerization in late embryogenesis.[provided by RefSeq, Jun 2010],

Nanjing BYabscience technology Co.,Ltd



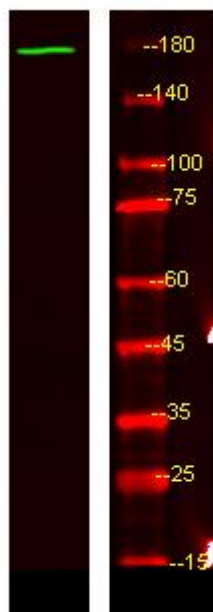
**matters needing attention**

Avoid repeated freezing and thawing!

**Usage suggestions**

This product can be used in immunological reaction related experiments. For more information, please consult technical personnel.

## Products Images



Western Blot analysis of various cells using NRK Monoclonal Antibody