



# BCL7B Monoclonal Antibody

Catalog No	BYmab-06680
Isotype	IgG
Reactivity	Human;Mouse
Applications	WB
Gene Name	BCL7B
Protein Name	B-cell CLL/lymphoma 7 protein family member B (allergen Hom s 3)
Immunogen	Synthesized peptide derived from part region of human protein
Specificity	BCL7B Monoclonal Antibody detects endogenous levels of protein.
Formulation	Liquid in PBS containing 50% glycerol, and 0.02% sodium azide.
Source	Monoclonal, Mouse,IgG
Purification	The antibody was affinity-purified from mouse antiserum by affinity-chromatography using epitope-specific immunogen.
Dilution	WB 1:500-2000
Concentration	1 mg/ml
Purity	≥90%
Storage Stability	-20°C/1 year
Synonyms	
Observed Band	22kD
Cell Pathway	
Tissue Specificity	Ubiquitous.
Function	allergen:Causes an allergic reaction in human. Binds to IgE from atopic dermatitis (AD) patients. Identified as an IgE autoantigen in atopic dermatitis (AD) patients with severe skin manifestations.,disease:Haploinsufficiency of BCL7B may be the cause of certain cardiovascular and musculo-skeletal abnormalities observed in Williams-Beuren syndrome (WBS) [MIM:194050]. WBS is a rare developmental disorder. It is a contiguous gene deletion syndrome involving genes from chromosome band 7q11.23.,function:May play a role in lung tumor development or progression.,similarity:Belongs to the BCL7 family.,tissue specificity:Ubiquitous.,
Background	This gene encodes a member of the BCL7 family including BCL7A, BCL7B and BCL7C proteins. This member is BCL7B, which contains a region that is highly

Nanjing BYabscience technology Co.,Ltd



similar to the N-terminal segment of BCL7A or BCL7C proteins. The BCL7A protein is encoded by the gene known to be directly involved in a three-way gene translocation in a Burkitt lymphoma cell line. This gene is located at a chromosomal region commonly deleted in Williams syndrome. This gene is highly conserved from *C. elegans* to human. Multiple alternatively spliced transcript variants have been found for this gene. [provided by RefSeq, Oct 2010],

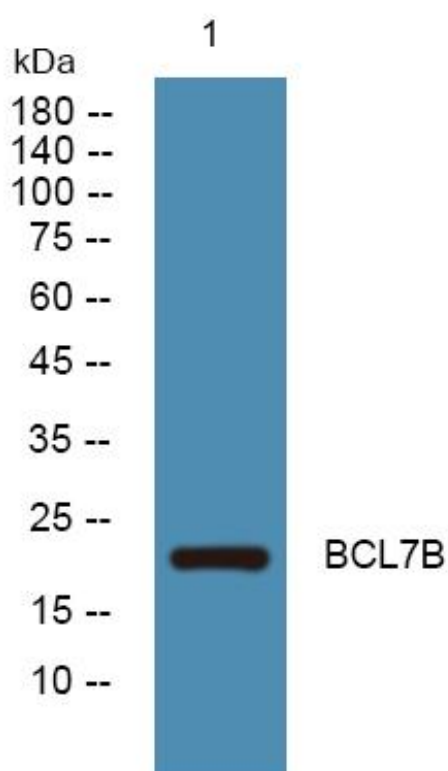
**matters needing attention**

Avoid repeated freezing and thawing!

**Usage suggestions**

This product can be used in immunological reaction related experiments. For more information, please consult technical personnel.

## Products Images



Western Blot analysis of various cells using BCL7B Monoclonal Antibody