



MARE2 Monoclonal Antibody

Catalog No	BYmab-06672
Isotype	IgG
Reactivity	Human;Mouse;Rat
Applications	WB
Gene Name	MAPRE2 RP1
Protein Name	Microtubule-associated protein RP/EB family member 2 (APC-binding protein EB2) (End-binding protein 2) (EB2)
Immunogen	Synthesized peptide derived from part region of human protein
Specificity	MARE2 Monoclonal Antibody detects endogenous levels of protein.
Formulation	Liquid in PBS containing 50% glycerol, and 0.02% sodium azide.
Source	Monoclonal, Mouse,IgG
Purification	The antibody was affinity-purified from mouse antiserum by affinity-chromatography using epitope-specific immunogen.
Dilution	WB 1:500-2000
Concentration	1 mg/ml
Purity	≥90%
Storage Stability	-20°C/1 year
Synonyms	
Observed Band	35kD
Cell Pathway	Cytoplasm, cytoskeleton . Associated with the microtubule network. Accumulates at the plus end of microtubules.
Tissue Specificity	Expressed in different tumor cell lines. Up-regulated in activated B- and T-lymphocytes.
Function	domain:Composed of two functionally independent domains. The N-terminal domain forms an hydrophobic cleft involved in microtubule binding and the C-terminal is involved in the formation of mutually exclusive complexes with APC and DCTN1.,function:May be involved in microtubule polymerization, and spindle function by stabilizing microtubules and anchoring them at centrosomes. May play a role in cell migration.,similarity:Belongs to the MAPRE family.,similarity:Contains 1 CH (calponin-homology) domain.,similarity:Contains 1 EB1 C-terminal domain.,subcellular location:Associated with the microtubule network. Accumulates at the plus end of microtubules.,subunit:Interacts with DCTN1. Binds to the C-terminal domain of APC. Binds monomeric and polymerized tubulin.,tissue specificity:Expressed in different tumor cell lines. Up-regulated in

Nanjing BYabscience technology Co.,Ltd



activated B- and T-lymphocytes.,

Background

The protein encoded by this gene shares significant homology to the adenomatous polyposis coli (APC) protein-binding EB1 gene family. This protein is a microtubule-associated protein that is necessary for spindle symmetry during mitosis. It is thought to play a role in the tumorigenesis of colorectal cancers and the proliferative control of normal cells. Alternative splicing of this gene results in multiple transcript variants. [provided by RefSeq, Jan 2012],

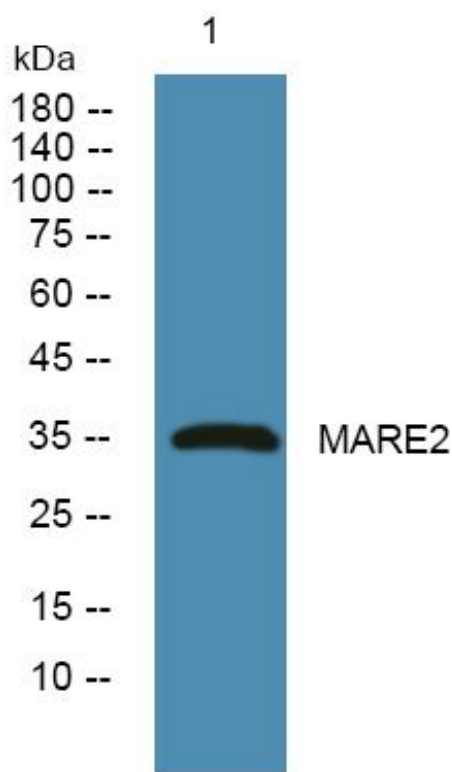
matters needing attention

Avoid repeated freezing and thawing!

Usage suggestions

This product can be used in immunological reaction related experiments. For more information, please consult technical personnel.

Products Images



Western Blot analysis of various cells using MARE2 Monoclonal Antibody