



XCL2 Monoclonal Antibody

Catalog No	BYmab-06662
Isotype	IgG
Reactivity	Human;Rat;Mouse;
Applications	WB
Gene Name	XCL2 SCYC2
Protein Name	Cytokine SCM-1 beta (C motif chemokine 2) (XC chemokine ligand 2)
Immunogen	Synthesized peptide derived from part region of human protein AA range: 1-50
Specificity	XCL2 Monoclonal Antibody detects endogenous levels of protein.
Formulation	Liquid in PBS containing 50% glycerol, and 0.02% sodium azide.
Source	Monoclonal, Mouse,IgG
Purification	The antibody was affinity-purified from mouse antiserum by affinity-chromatography using epitope-specific immunogen.
Dilution	WB 1:500-2000
Concentration	1 mg/ml
Purity	≥90%
Storage Stability	-20°C/1 year
Synonyms	
Observed Band	12kD
Cell Pathway	Secreted.
Tissue Specificity	Blood,Placenta,
Function	function:Chemotactic activity for lymphocytes but not for monocytes or neutrophils.,online information:XCL2 entry,similarity:Belongs to the intercrine gamma family.,
Background	function:Chemotactic activity for lymphocytes but not for monocytes or neutrophils.,online information:XCL2 entry,similarity:Belongs to the intercrine gamma family.,
matters needing attention	Avoid repeated freezing and thawing!

Nanjing BYabscience technology Co.,Ltd

网址: www.njbybio.com

官方热线: 025-5229-8998

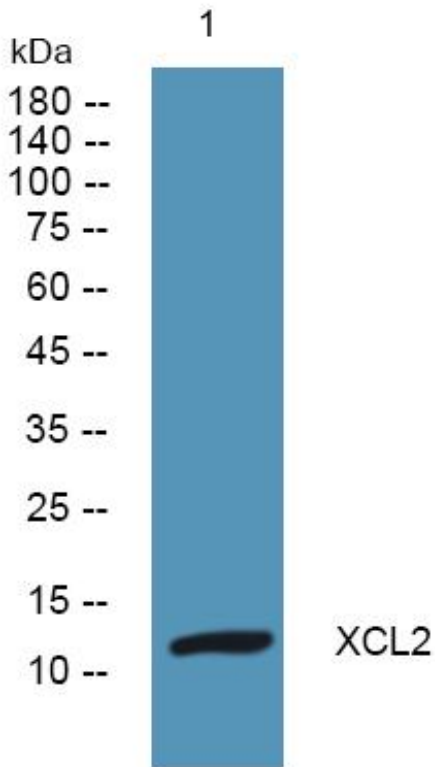
监督电话: 15950492658



Usage suggestions

This product can be used in immunological reaction related experiments. For more information, please consult technical personnel.

Products Images



Western Blot analysis of various cells using XCL2 Monoclonal Antibody

Nanjing BYabs science technology Co.,Ltd

网址: www.njbybio.com

官方热线: 025-5229-8998

监督电话: 15950492658