



ITBP1 Monoclonal Antibody

Catalog No	BYmab-06639
Isotype	IgG
Reactivity	Human;Mouse
Applications	WB
Gene Name	ITGB1BP1 ICAP1
Protein Name	Integrin beta-1-binding protein 1 (Integrin cytoplasmic domain-associated protein 1) (ICAP-1)
Immunogen	Synthesized peptide derived from part region of human protein
Specificity	ITBP1 Monoclonal Antibody detects endogenous levels of protein.
Formulation	Liquid in PBS containing 50% glycerol, and 0.02% sodium azide.
Source	Monoclonal, Mouse,IgG
Purification	The antibody was affinity-purified from mouse antiserum by affinity-chromatography using epitope-specific immunogen.
Dilution	WB 1:500-2000
Concentration	1 mg/ml
Purity	≥90%
Storage Stability	-20°C/1 year
Synonyms	
Observed Band	22kD
Cell Pathway	Nucleus. Cytoplasm. Cytoplasm, cytoskeleton . Cell membrane . Cell projection, lamellipodium. Cell projection, ruffle. Nucleocytoplasmic shuttling protein; shuttles between nucleus and cytoplasm in a integrin-dependent manner; probably sequestered in the cytosol by ITGB1. Its localization is dependent on the stage of cell spreading on fibronectin; cytoplasmic in case of round cells, corresponding to the initial step of cell spreading, or nuclear in case of well spread cells. Colocalizes with ROCK1 and NME2 at beta-1 integrin engagement sites. Together with ITGB1 and NME2 is recruited to beta-1 integrin-rich peripheral ruffles and lamellipodia during initial cell spreading on fibronectin and/or collagen.
Tissue Specificity	Expressed in endothelial cells and fibroblasts (at protein level). Ubiquitously expressed. Expressed in intestine, colon, testis, ovary, thymus, spleen and prostate.
Function	function:May play a role in the recruitment of beta-1 integrins to the focal contacts during integrin-dependent cell adhesion. Isoform 2 does not bind the integrin cytoplasmic domain-associated protein-1.,PTM:Isoform 1 appears to be

Nanjing BYabscience technology Co.,Ltd



phosphorylated. The degree of phosphorylation is regulated by integrin-dependent cell-matrix interaction.,similarity:Contains 1 PID domain.,subunit:Interacts specifically with the beta-1 integrin cytoplasmic domain-associated protein-1.,tissue specificity:Expressed in intestine, colon, testis, ovary, thymus, spleen and prostate.,

Background

The cytoplasmic domains of integrins are essential for cell adhesion. The protein encoded by this gene binds to the beta1 integrin cytoplasmic domain. The interaction between this protein and beta1 integrin is highly specific. Two isoforms of this protein are derived from alternatively spliced transcripts. The shorter form of this protein does not interact with the beta1 integrin cytoplasmic domain. The longer form is a phosphoprotein and the extent of its phosphorylation is regulated by the cell-matrix interaction, suggesting an important role of this protein during integrin-dependent cell adhesion. Several transcript variants, some protein-coding and some non-protein coding, have been found for this gene. [provided by RefSeq, Jan 2016],

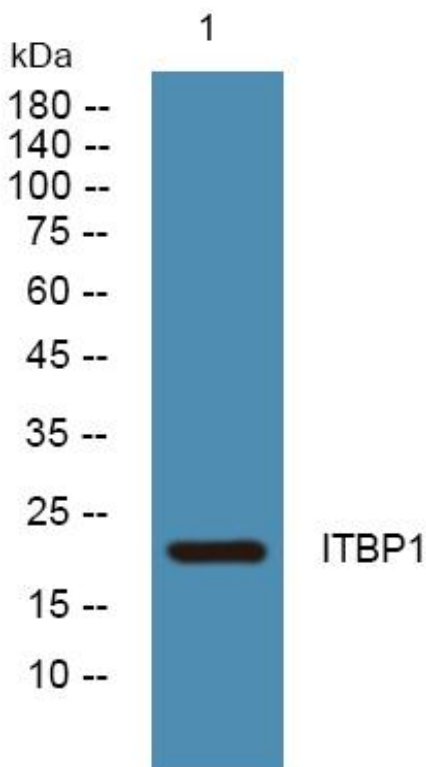
matters needing attention

Avoid repeated freezing and thawing!

Usage suggestions

This product can be used in immunological reaction related experiments. For more information, please consult technical personnel.

Products Images



Western Blot analysis of various cells using ITBP1 Monoclonal Antibody